

Supplementary Table S1. Baseline characteristics-laboratory findings

Variables	Overall population			Propensity-matched population		
	Low-LDL-C (N = 1,202)	High-LDL-C (N = 593)	P value	Low-LDL-C (N = 443)	High-LDL-C (N = 443)	P value
LDL-C, mmol/L [†]	1.85 (1.49–2.21)	3.15 (2.73–3.57)	< 0.001*	1.84 (1.57–2.12)	3.20 (2.76–3.64)	< 0.001*
HDL-C, mmol/L [†]	0.95 (0.77–1.14)	1.02 (0.85–1.20)	< 0.001*	0.98 (0.84–1.12)	1.04 (0.90–1.18)	0.216
TG, mmol/L [†]	1.28 (0.85–1.72)	1.55 (1.12–1.98)	< 0.001*	1.44 (0.79–2.09)	1.53 (1.10–1.97)	< 0.001*
eGFR (SD), mL/min/1.73 m ^{2††}	71.86 (56.03–87.69)	77.11 (58.83–95.39)	< 0.001*	75.62 (60.48–90.76)	79.83 (60.44–99.21)	0.362

Note. LDL-C, low density lipoprotein cholesterol; HDL-C, high density lipoprotein cholesterol; TG, triglyceride; eGFR, estimated glomerular filtration rate. [†]Median (Interquartile range). [‡]eGFR is estimated by using the Modification of Diet in Renal Disease equation. *P < 0.050.

Supplementary Table S2. Baseline characteristics-coronary angiographic and procedural findings

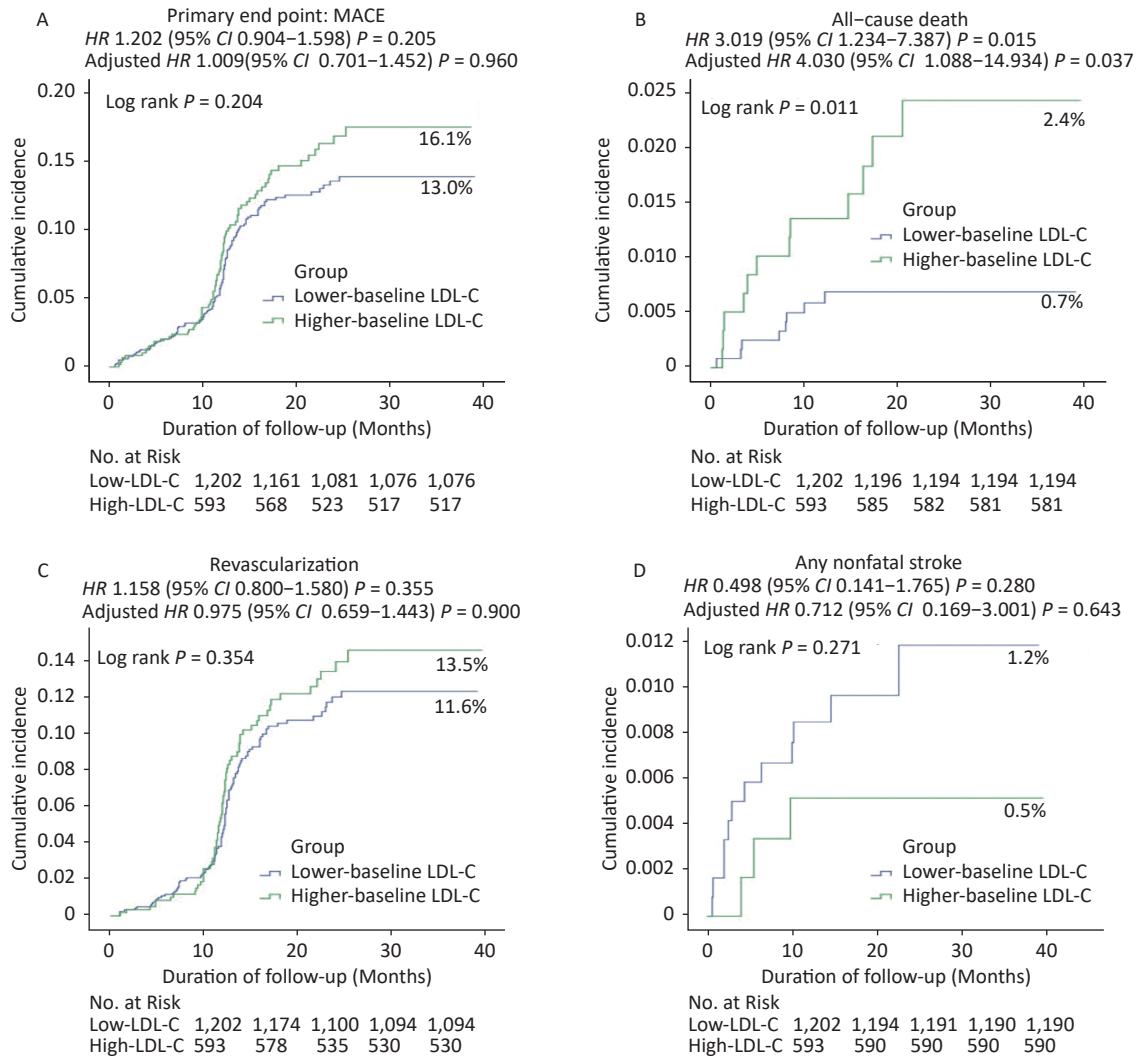
Variables N (%)	Overall population			Propensity-matched population		
	Low-LDL-C (N = 1,202)	High-LDL-C (N = 593)	P value	Low-LDL-C (N = 443)	High-LDL-C (N = 443)	P value
Multivessel coronary disease	186/1,147 (16.2)	108/558 (19.4)	0.107	91/443 (20.5)	91/443 (20.5)	1.000
Culprit vessel						
Left main	104/1,147 (9.1)	49/558 (8.8)	0.846	42/443 (9.5)	39/443 (8.8)	0.727
Left anterior descending	718/1,147 (62.6)	344/558 (61.6)	0.704	271/443 (61.2)	278/443 (62.8)	0.628
Left circumflex	220/1,147 (19.2)	134/558 (24.0)	0.021*	114/443 (25.7)	107/443 (24.2)	0.587
Right	278/1,147 (24.2)	136/558 (24.4)	0.951	106/443 (23.9)	104/443 (23.5)	0.874
Lesion type B2 or C	1,067/1,108 (96.3)	502/529 (94.9)	0.183	404/430 (94.0)	398/420 (94.8)	0.610
Calcification lesion	191/1,111 (17.2)	95/534 (17.8)	0.764	81/431 (18.8)	75/425 (17.6)	0.664
CTO	52/1,111 (4.7)	37/536 (6.9)	0.062	17/431 (3.9)	27/424 (6.4)	0.109
Primary PCI	251/1,147 (21.9)	93/558 (16.7)	0.012*	80/443 (18.1)	72/443 (16.3)	0.476
Stent length (mm)	39 ± 22	40 ± 23	0.209	53 ± 28	55 ± 25	0.110
Stent diameter ≥ 2.5 mm	934/1,147 (81.4)	457/558 (81.9)	0.814	352/443 (79.5)	362/443 (81.7)	0.396
Stent number	2.3 ± 1.0	2.2 ± 0.8	0.498	2.2 ± 0.9	2.2 ± 0.9	0.762

Note. CTO, chronic total occlusion. *P < 0.050.

Supplementary Table S3. Baseline characteristics-medications

Variables N (%)	Overall population			Propensity-matched population		
	Low-LDL-C (N = 1,202)	High-LDL-C (N = 593)	P value	Low-LDL-C (N = 443)	High-LDL-C (N = 443)	P value
Medications						
Antiplatelet drug						
Aspirin	1,163/1,202 (96.8)	581/591 (98.3)	0.058	432/443 (97.5)	436/443 (98.4)	0.341
Clopidogrel	1,079/1,202 (89.8)	535/591 (90.5)	0.615	408/443 (92.1)	403/443 (91.0)	0.546
Ticagrelor	6/1,202 (0.5)	4/591 (0.7)	0.738	0/443 (0.0)	3/443 (0.7)	0.083
Cilostazol	32/1,202 (2.7)	8/591 (1.4)	0.078	10/443 (2.3)	6/443 (1.4)	0.313
Warfarin	15/1,202 (1.2)	8/591 (1.4)	0.852	9/443 (2.0)	5/443 (1.1)	0.281
Lipid-lowering drug						
Statin	1,186/1,202 (98.7)	582/591 (98.5)	0.745	439/443 (99.1)	437/443 (98.6)	0.525
Fibrates	8/1,202 (0.7)	2/591 (0.3)	0.382	4/443 (0.9)	2/443 (0.5)	0.413
Ezetimibe	93/1,202 (7.7)	147/591 (24.9)	< 0.001*	71/443 (16.0)	79/443 (17.8)	0.474
ACEI or ARB	715/1,202 (59.5)	352/591 (59.6)	0.975	249/443 (56.2)	256/443 (57.8)	0.635
Beta-blocker	671/1,202 (55.8)	303/591 (51.3)	0.069	230/443 (51.9)	219/443 (49.4)	0.460
CCB	302/1,202 (25.1)	151/591 (25.5)	0.846	96/443 (21.7)	117/443 (26.4)	0.099

Note. ACEI, angiotensin-converting enzyme inhibitor; ARB, angiotensin-receptor blocker; CCB, Dihydropyridine calcium-channel blocker. * $P < 0.050$.



Supplementary Figure S1. Cumulative Incidence of Clinical Outcomes in the Propensity-matched population. Kaplan–Meier Curves for the (A) Primary End Point, (B) all-cause death, (C) Revascularization and (D) any nonfatal stroke in the Propensity-matched population.