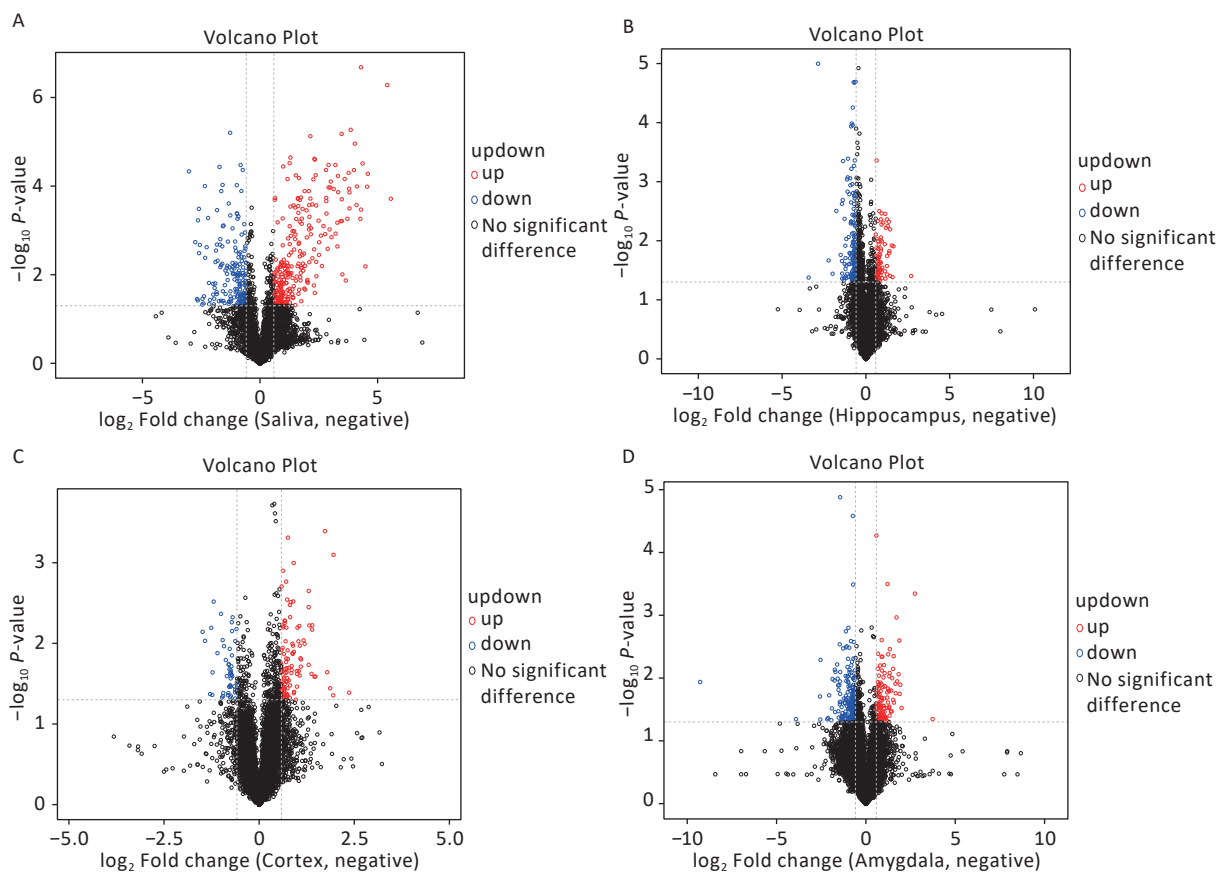
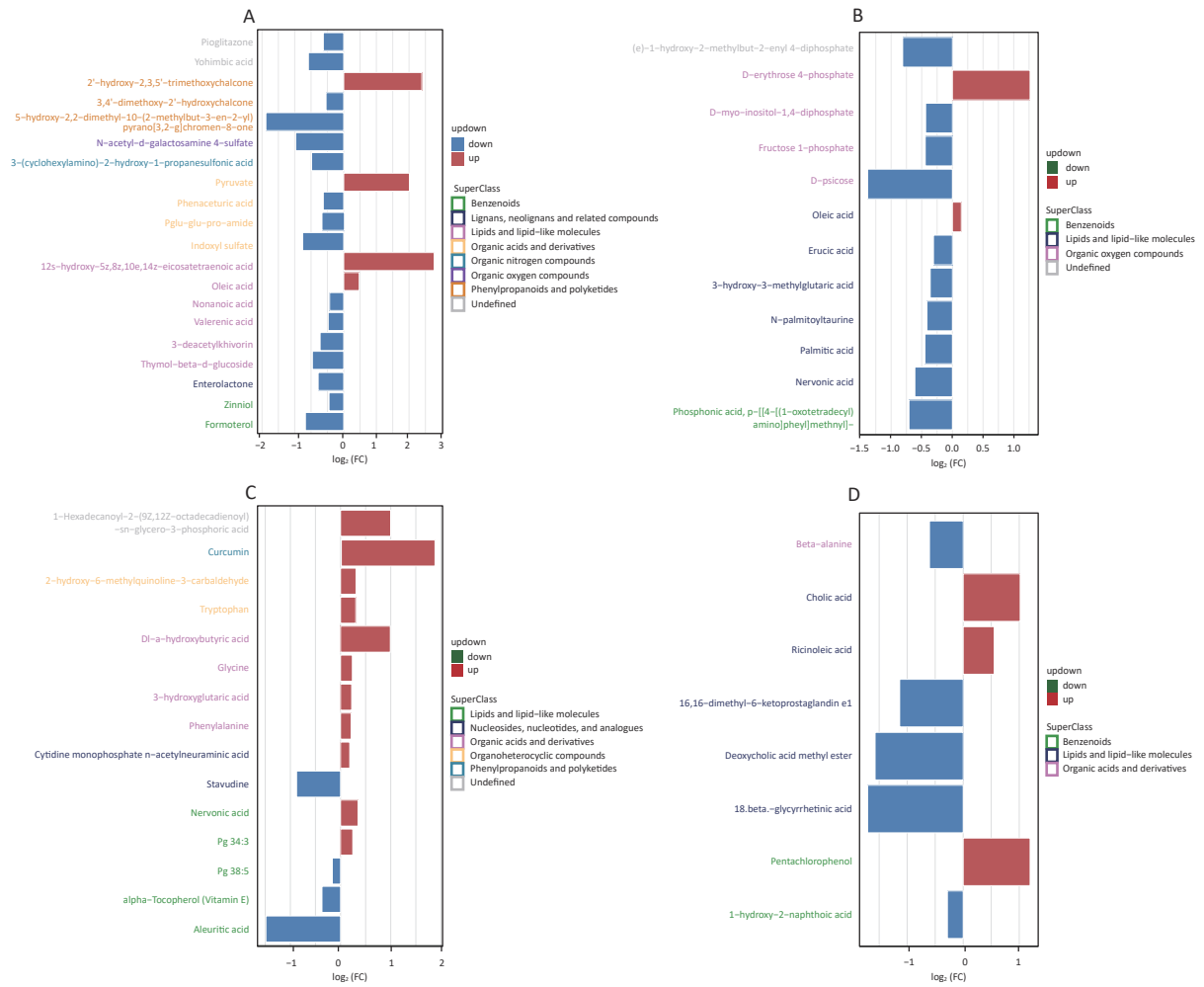


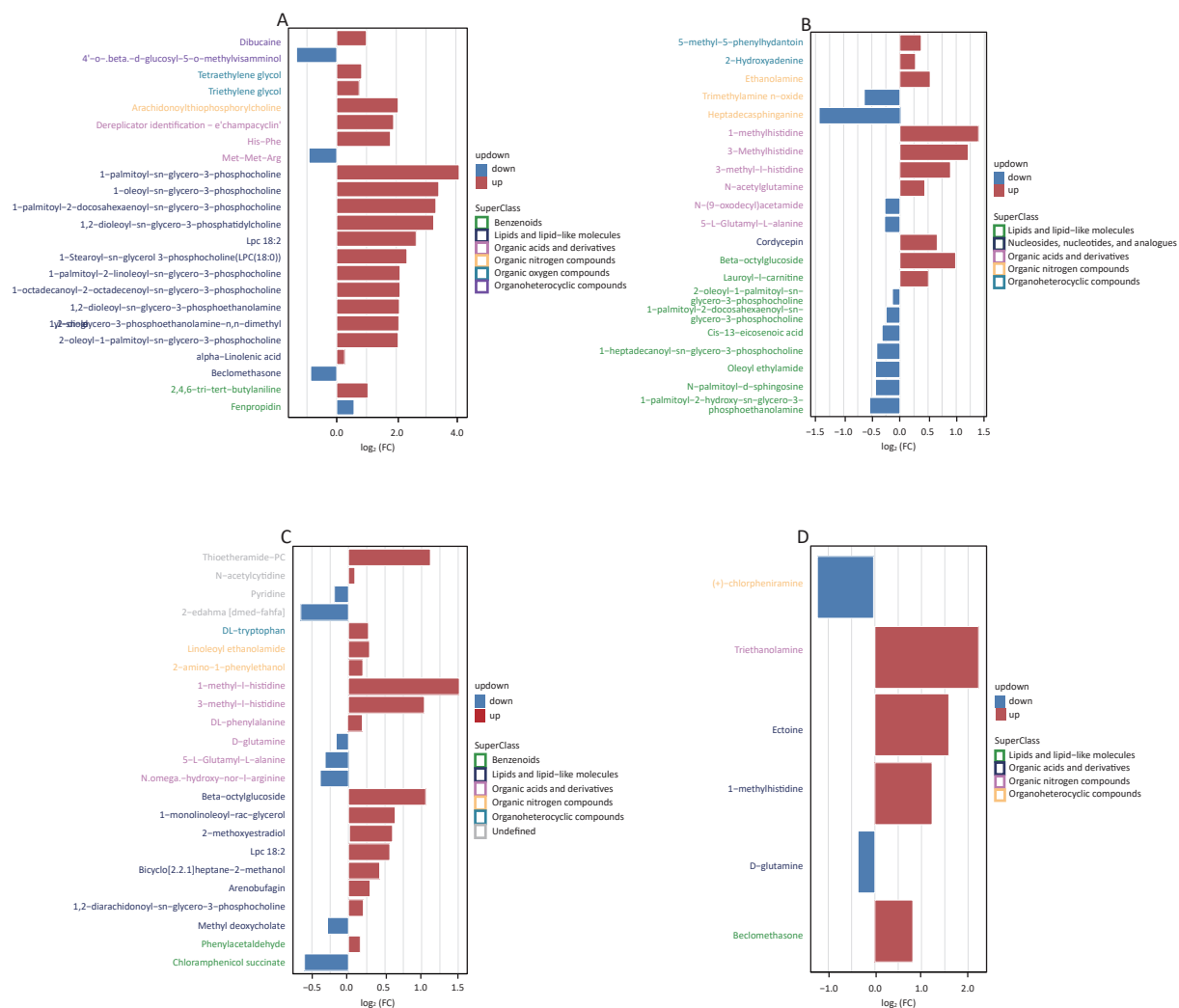
Supplementary Figure S1. Quality control of experimental data (hippocampus, cortex and amygdala). Person correlation analysis on the quality control hippocampus sample in the positive (A) and negative (B) modes; cortex sample in the positive (C) and negative (D) modes; amygdala sample in the positive (E) and negative (F) modes. Permutation tests between the two groups of hippocampus sample in the positive mode (G) and the negative mode (H); cortex sample in the positive (I) and negative (J) modes; amygdala sample in the positive (K) and negative (L) modes.



Supplementary Figure S2. The volcanic plots present differentials: (A) saliva, (B) hippocampus, (C) cortex, (D) amygdala metabolites with the criteria of $FC > 1.5$ or $FC < 0.67$, $P\text{-value} < 0.05$ in negative mode.



Supplementary Figure S3. Screening for differential metabolites in saliva (A), hippocampus (B), cortex (C), and amygdala (D) under positive mode with criteria OPLS-DA VIP > 1 and P value < 0.05.



Supplementary Figure S4. Screening for differential metabolites in saliva (A), hippocampus (B), cortex (C), and amygdala (D) under negative mode with criteria OPLS-DA VIP > 1 and P value < 0.05.