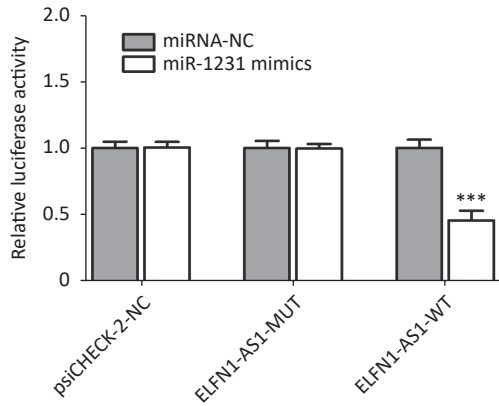
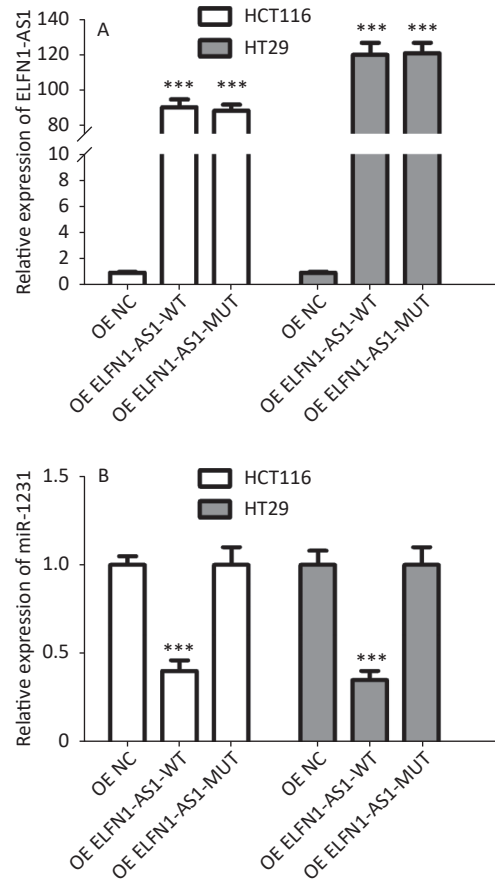




**Supplementary Figure S1.** Effect of the rs3735664 polymorphism on miR-1231 and miR-599 binding to *ELFN1-AS1*.



**Supplementary Figure S3.** Effect of different rs3735664 alleles on the binding of *ELFN1-AS1* to miR-1231.



**Supplementary Figure S2.** Effect of overexpression of *ELFN1-AS1* carrying different rs3735664 alleles on miR-1231 expression in CRC cells (A: Relative expression of *ELFN1-AS1* in CRC cells; B: Relative expression of miR-1231 in CRC cells).

**Supplementary Table S1.** Demographic and clinicopathological characteristics of CRC patients and cancer-free individuals

Characteristics	CRC patients (n = 500)	Cancer-free individuals (n = 500)	P
Age (mean $\pm$ SD)	59.18 $\pm$ 7.46	59.70 $\pm$ 7.63	0.28
Gender, n (%)			
Female	226 (45.2)	217 (43.4)	0.57
Male	274 (54.8)	283 (56.6)	
TMN stages, n (%)			
I + II	248 (49.6)		
III + IV	252 (50.4)		

**Supplementary Table S2.** The primer sequences for qRT-PCR

Gene	Forward (5' to 3')	Reverse (5' to 3')
<i>ELFN1-AS1</i>	ACTCTCAGCCCCACCTAGT	ATTCAACGGAAGAGGAAGCA
miR-599	GCCGAGGTTGTGCAGTTT	CTCAACTGGTGTCTGGAGT
miR-1231	CCTCAACTGAATTGCCGACTC	CTCAACTGGTGTCTGGAGTC
GAPDH	CTCTGATTTGGTCGTATTGGGC	CCTGGAAGATGGTGATGGGATT
U6	CTCGCTTCGGCAGCACCA	AACGCTTCACGAATTTGCGT