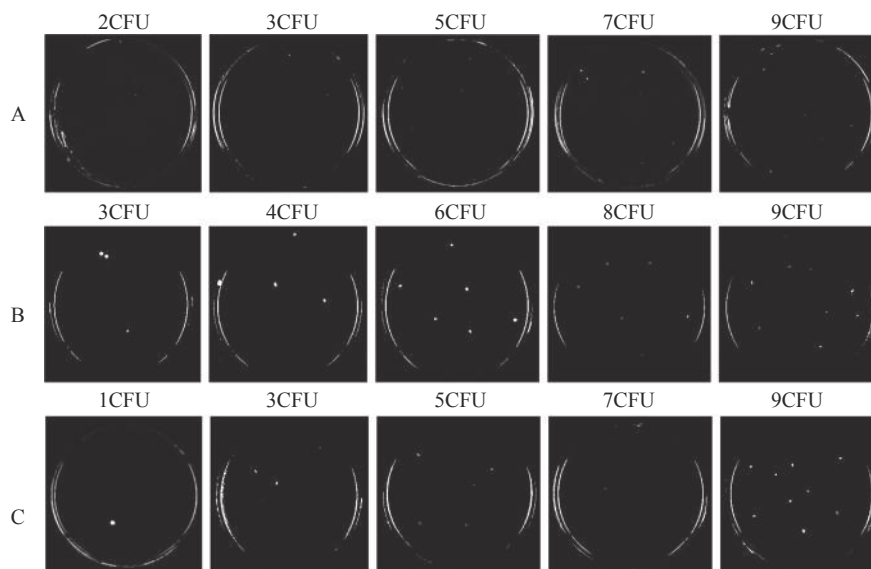


Supplementary Table S1. The reproducibility of M-RAP

Standard DNA (copies/ μ L)	SA	PA	AB	Standard DNA (ng/ μ L)	SA	PA	AB
10^5	8/8 ^a	8/8	8/8	10^{-1}	8/8	8/8	8/8
10^4	8/8	8/8	8/8	10^{-2}	8/8	8/8	8/8
10^3	8/8	8/8	8/8	10^{-3}	8/8	8/8	8/8
10^2	8/8	8/8	8/8	10^{-4}	8/8	8/8	8/8
10^1	8/8	7/8	8/8	10^{-5}	7/8	6/8	8/8
10^0	5/8	0/8	6/8	10^{-6}	4/8	0/8	5/8

Note. ^aThe first number indicates the number of times a positive result occurred. The second number indicates that the experiment was repeated eight times. SA, *Staphylococcus aureus*; PA, *Pseudomonas aeruginosa*; AB, *Acinetobacter baumannii*; M-RAP, Multiple-recombinase-aided PCR.



Supplementary Figure S1. After enrichment with M1 beads, simulated PBS samples of SA (A), PA (B), and AB (C) were used to grow on plate culture corresponding to the bacterial colonies.