

Responsible Institution: National Health and Family Planning Commission of the People's Republic of China

Sponsor: Chinese Center for Disease Control and Prevention.

155 Changbai Road, Changping District, Beijing 102206, China

Editing: Editorial Board of Biomedical and Environmental Sciences

Address: Editorial Office of Biomedical and Environmental Sciences, Chinese Center for Disease Control and Prevention

155 Changbai Road, Changping District, Beijing 102206, China

Tel: 86-10-58900404, 58900455, 58900233

Full Text and Manuscript Submission: www.besjournal.com E-mail: bes@chinacdc.cn

Managing Editor: ZHANG Qun

Publishing: Editorial Office of BES, Chinese Center for Disease Control and Prevention

Printing: Beijing Kexin Printing Co., Ltd

Domestic and Overseas Distribution: Chinese Center for Disease Control and Prevention

Mail-Order: Editorial Office of Biomedical and Environmental Sciences

E-mail: besjournal@sina.com

Annual Subscription for Vol. 30, 2017: RMB: ¥1200; USD: \$560.00.

CSSN: ISSN 0895-3988 / CN 11-2816/Q

Copyright: © 2017 Published by China CDC. All Rights Reserved. No part of this publication may be reproduced, stored in a retrieval system, or transmitted in any form or by any means, electronic, mechanical, photocopying, recording, or otherwise without the prior permission of BES. Authors are required to grant BES an exclusive license to publish.

Special Statement: All articles published in this journal represent the viewpoints of the authors except where indicated otherwise.

Instructions to Authors: Full instructions are available online at www.besjournal.com.

Copyright © 2017 by China CDC

BES

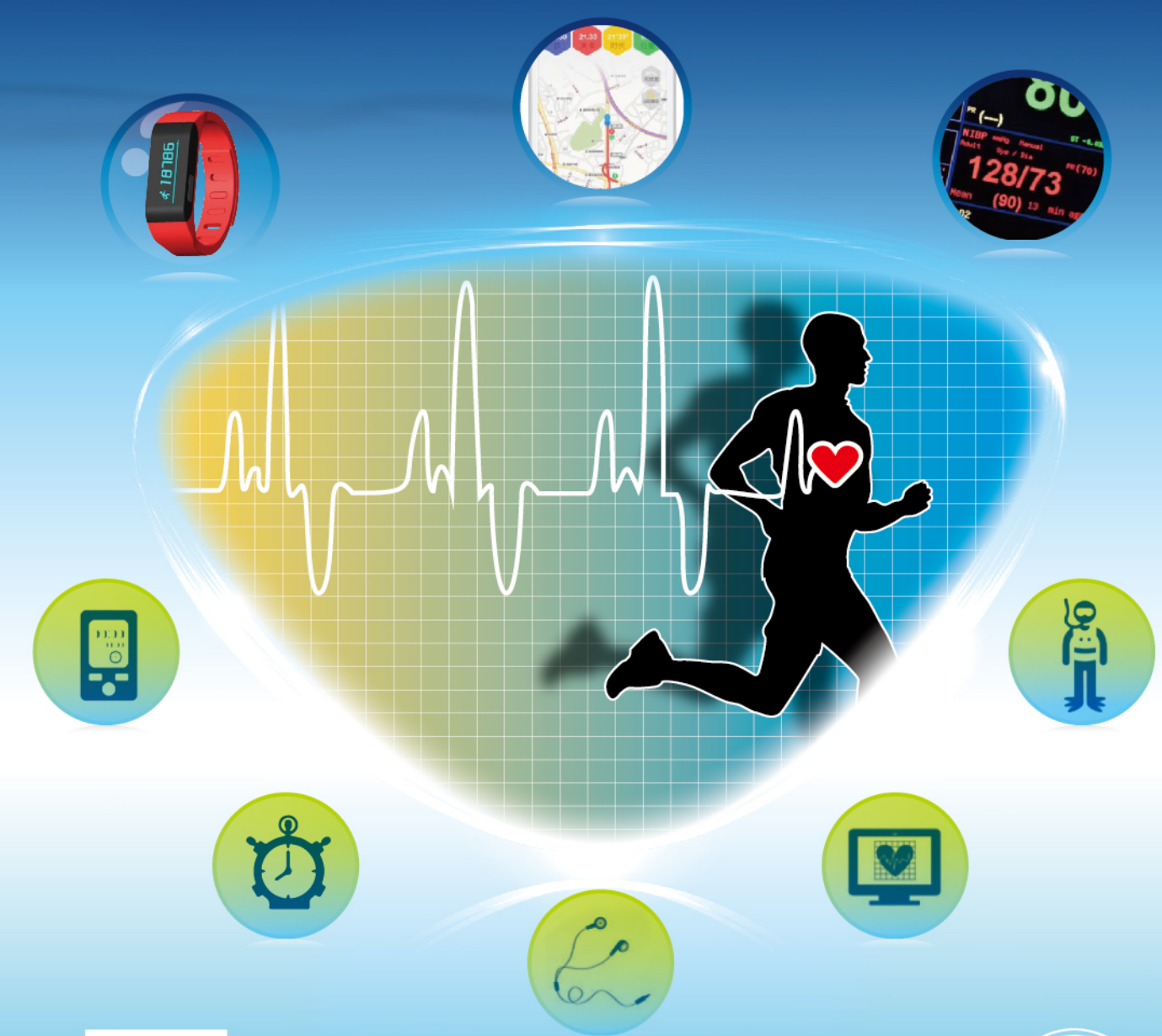
生物医学与环境科学

Vol.30, No.6, June 2017

Biomedical and Environmental Sciences

Biomedical and Environmental Sciences

Vol.30, No.6, June 2017



NHFPC
of the PRC



Chinese Center for Disease
Control and Prevention