

Original Article



Potentially Toxic Element Concentration in Fruits Collected from Markazi Province (Iran): A Probabilistic Health Risk Assessment

Mohammad Rezaei^{1,2}, Bahareh Ghasemidehkordi³, Babak Peykarestan⁴, Nabi Shariatifar²,
Maryam Jafari², Yadolah Fakhri⁵, Maryam Jabbari⁶, and Amin Mousavi Khaneghah^{7,#}

1. Department of Food Hygiene, Faculty of Veterinary Medicine, University of Tehran, Tehran, Iran; 2. Department of Food Safety and Hygiene, School of Public Health, Tehran University of Medical Sciences, Tehran, Iran; 3. Department of Biochemistry, Payame Noor University, Isfahan, Iran; 4. Department of Agriculture, Payame Noor University, Tehran, Iran; 5. Department of Environmental Health Engineering, School of Public Health and Safety, Student Research Committee, Shahid Beheshti University of Medical Sciences, Tehran, Iran; 6. Department of Public Health, School of Paramedical and Health, Zanjan University of Medical Sciences, Zanjan, Iran; 7. Department of Food Science, Faculty of Food Engineering, University of Campinas (UNICAMP), Rua Monteiro Lobato, 80. Caixa Postal: 6121.CEP: 13083-862. Campinas. São Paulo. Brazil

Abstract

Objective This study was conducted to evaluate the concentration of potentially toxic elements (PTEs) such as arsenic (As), cadmium (Cd), mercury (Hg), and lead (Pb) in fruit samples collected from Markazi Province, Iran. A probabilistic health risk assessment due to ingestion of PTEs through the consumption of these fruits was also conducted.

Methods The concentration of PTEs in 90 samples of five types of fruits ($n = 3$) collected from six geographic regions in Markazi Province was measured. The potential health risk was evaluated using a Monte Carlo simulation model.

Results A significant difference was observed in the concentration of PTEs between fruits as well as soil and water samples collected from different regions in Markazi Province. The order of PTE concentration in the soil and water samples was as follows: Pb > As > Hg > Cd. Furthermore, the highest level of transfer factor for Cd and Hg correlated with the grape. The estimated daily intake for adults and children was lower than the recommended tolerable daily intake.

Conclusion The population in Markazi Province, Iran, is not at considerable noncarcinogenic or carcinogenic risk due to the ingestion of PTEs through the consumption of the examined fruits.

Key words: Fruits; Soil; Water; Toxic elements; Target Hazard Quotient (THQ); Estimated Hazard Index (HI)

Biomed Environ Sci, 2019; 32(11): 839-853 doi: 10.3967/bes2019.105

ISSN: 0895-3988

www.besjournal.com (full text)

CN: 11-2816/Q

Copyright ©2019 by China CDC

INTRODUCTION

Consumption of food products contaminated with potentially toxic elements (PTEs) is one of the primary

health issues across the world^[1,2]. Due to their nonbiodegradable properties, the long half-life, and the accumulative behaviors, PTEs can contaminate different environments such as soil, water, and air, which consequently results in further contamination

[#]Correspondence should be addressed to Amin Mousavi Khaneghah, E-mail: mousavi@unicamp.br
Biographical note of the first author: Mr. Mohammad Rezaei, male, born in 1988, PhD candidate, majoring in food toxicology, food contaminants and risk assessment.

of food products, i.e., vegetables and fruits^[3,4]. In this regard, the ingestion of contaminants through the food chain is one of the most important pathways of PTE intake^[5-7]. However, a variety of PTEs in various concentrations are important for plant growth; they can be accumulated in high levels among the storage tissues of plants, such as tubers, fruits, and leaves^[8-10], and then transfer to the food chain, which can lead to adverse side effects. Furthermore, PTEs can reduce the quality and the production rate of crops^[11]. On the other hand, PTEs such as arsenic (As), cadmium (Cd), mercury (Hg), and lead (Pb) are routinely discharged into the environment through metallurgical and industrial processes besides their natural occurrences^[8,12-14].

The contamination of crops with PTEs can cause serious health issues for consumers due to their teratogenic, mutagenic, and carcinogenic properties^[15-18]. In addition, excessive levels of PTEs ingested through the diet can lead to some disorders such as neurological, cardiovascular, nervous, renal, liver, and bile issues^[15].

Pb and Cd as PTEs for living beings are among the most abundant elements in the world^[19,20]. Pb is used in the manufacture of batteries, paints, and gasoline additives as well as in various metal products such as solder, pipes, and Pb sheets^[21]. Exhausts of vehicles release a significant amount of Pb into the air, of which a certain amount is uptaken by plants, fixed in the soil, and penetrates water resources. In this context, inhalation and ingestion are the two major routes of exposure to Pb and Cd^[21]. Moreover, excessive uptake of Pb into the body can cause certain adverse health issues such as hypertension, nephropathy, abnormalities in blood composition^[22], and cardiovascular disease^[23].

Cd is a widely distributed compound in the earth, and although it is not degradable, it can be naturally found in combination with zinc in the earth's crust as a side-product of Zn production^[21]. Although Cd is considered as a PTE, it is used in paint industries, rechargeable batteries, and in the production of alloys; it can also be found in tobacco smoke^[24]. It can remain in the environment for several decades^[21], and when absorbed by living beings, it causes adverse effects to the liver and lungs. Furthermore, Cd disturbs the metabolic pathways associated with several important enzymes and could have an effect on neural cell apoptosis^[25]. Further health issues such as painful osteomalacia or osteotoxicity, destruction of red blood cells, and kidney damage or nephrotoxicity are among the consequences of Cd uptake in high

concentrations^[26].

Hg, as a bioaccumulative toxic element, has some adverse effects on the marine environment as well as in human beings^[27]. It has been reported that Hg poisoning can result in chest pain, hemolytic anemia, bronchitis, and pulmonary fibrosis^[28,29]. Hg can be found in three different forms, organic, inorganic, and elemental Hg, which is widely used in various products such as mercurochrome and merthiolate^[22]. Ethyl Hg is used as a maintenance material to prevent bacterial contamination of multidose vaccine vials^[30] as well as in the production of fluorescent and arc lamps, barometers, and hydrometers.

As is found in two forms, organic and inorganic^[31]. It can accumulate in keratin-rich tissues such as the skin, nails, and hairs and can also transfer to blood flow and further excrete in urine^[32-34]. Pigmentation, keratosis, liver damage, and lung diseases are among the disorders caused by the consumption of food and water contaminated with As^[35].

Foods may get contaminated with PTEs due to a variety of reasons such as irrigation with contaminated water, application of fertilizers and metal-based pesticides, industrial emissions or air pollution, transportation, harvesting process, and unsuitable conditions for storage and/or distribution^[36]. In addition to their rich contents of minerals, vitamins, and carotenoids, fruits can absorb PTEs not only from the soil but also from contaminated water and air. Therefore, monitoring the levels of PTEs in fruits due to their huge impact on human health is a matter of significant concern.

PTE content in different fruits has been assessed in some regions of the world. For example, there are reports on peach, orange, cherry, and pineapple juices from Tehran, Iran^[3]; banana, peach, orange, strawberry, watermelon, melon, apple, grape, and mango from Misrata city, Libya^[11]; strawberry, cherry, and grape from Manisa, Turkey^[36]; apple, banana, melon, date, grapefruit, peach, orange, strawberry, and watermelon from Alexandria city, Egypt^[37]; guava, banana, apple, bush butter, grape, orange, pawpaw, avocado, pineapple, local pear, tangerine, and bush mango from Owerri, Southeastern Nigeria^[38]; and plum, grape, apple, pear, raspberry, gooseberry, and blackcurrant from Baia Mare mining area, Romania^[39].

Several previous studies have conducted risk assessments of PTEs among different food products (vegetables, tea, hen eggs, and dairy products) produced and supplied in Markazi Province,

Iran^[9,14,40-43]. However, to our knowledge, no previous investigation has determined the concentration of PTEs in fruits produced in Markazi Province, which is one of the most important industrial zones of Iran. Therefore, in this study, inductively coupled plasma atomic emission spectroscopy (ICP-OES) was applied to evaluate the concentration of PTEs in popular Iranian fruits such as peach, apple, grape, nectarine, and golden plum, which were cultivated and consumed in an industrial zone of Iran (Markazi Province). In addition, the transfer of PTEs from the soil to the fruits and the carcinogenic and noncarcinogenic risks were determined based on certain safety factors such as the estimated daily intake (EDI) and the target hazard quotient (THQ).

MATERIALS AND METHODS

Study Site

The study was conducted in Markazi Province located in the west of Iran at a latitude of 34° 05' 30.26" N and a longitude of 49° 41' 20.98" E. As Markazi Province is a developed, industrial, and agricultural region, heavy pollution can be found on most of the days in a year. Six different sites (cities) of Markazi Province, namely, Saveh, Khondab, Khomein, Mahallat, Tafresh, and Delijan, were selected for this study due to their fewer distances from industrial zones (Figure 1). The mean annual precipitation was 278 mm/year with a relative humidity of 46%, and the mean temperature is approximately 12.8 °C, with the minimum and maximum annual temperature being approximately -13 °C to -35 °C and 36-49 °C, respectively. The population of this region is about 1.43 million inhabitants.

Chemicals and Reagents

All chemicals and standards and stock standard solutions of As, Cd, Hg, and Pb of analytical grade (purity > 99%) were purchased from Merck (Darmstadt, Germany). Double-deionized water was used in the preparation of all dilutions.

Fruit Sampling and Preparation

Different summer fruits such as peach (*Prunus persica*) ($n = 15$), apple (*Malus domestica*) ($n = 15$), grape (*Vitis vinifera*) ($n = 15$), nectarine (*Prunus persica*) ($n = 15$), and golden plum (*Prunus domestica* subsp. *Syriaca*) ($n = 15$) in three replicates ($n = 3$) were collected (a total of 90 samples) randomly from

six agricultural sites in Markazi Province (1 kg of each sample). All fruit samples were collected from June to July 2018 and prepared according to the procedure recommended by previous studies^[42,44].

Soil Sampling and Preparation

Based on previously described methods^[42,45,46], a total of 18 soil samples were collected from around the plant (6 agricultural sites × 3 sample plots; soil samples from each site were collected by excavating 1.5-m radial distance from the plant center) and were prepared for analysis.

Water Sampling and Preparation

A total of 18 irrigation water samples (1 L of each sample) were collected from the experimental sites (6 agricultural sites × 3 sample plots) and stored in precleaned high-density polyethylene bottles, which were washed with 10% HNO₃ overnight and then with deionized water and were dried before use. The water samples were filtered and acid-stabilized, and approximately 20 mL HCl was added to the sample^[42,47,48]. The samples can be introduced into a plasma directly.

Instrumental Analysis

The ICP-OES method was used for analyzing all samples based on the method described in our previous investigation^[42].

Method Validation

Calibration Curves A calibration curve was used to check the linearity of the method. Individual stock standard solutions (10 µg/mL) were prepared as follows: 2.5, 5, 10, 100, 200, 300, 500, and 1,000 µL. Then, the mixed standard stock solutions were added to 10 g of blank samples^[39,46].

Limits of Detection and Quantification The sensitivity of the analytical methods was investigated by the limit of detection (LOD) (signal-to-noise; S/N ratios of 1/3) and the limit of quantification (LOQ) (10 times more than that of background noise in spiked samples at lowest levels).

Recovery Studies For investigation of the recovery, spiked fruit, soil, and water blank samples at concentration levels of 25, 75, 150, 250, 500, and 750 µg/mL of PTEs (As, Cd, Hg, and Pb) were prepared in triplicates and then treated according to the procedure described in the original sample preparation^[42,49].

Transfer Factor

The transfer factor (TF) is defined as the ratio of

PTEs in the soil to their ratio in plant tissues, which indicates internal PTE transportation or transfer of PTEs from the soil to the fruits. Soil to plant transfer is the primary pathway of human exposure to PTE contamination^[50]. A higher TF level of > 1 reflects the high ability of the plant to absorb each PTE.

Risk Assessment

Estimated Daily Intake The EDI was estimated using the following Equation^[51-54]:

$$EDI = \frac{C \times IR \times EF \times ED}{BW \times AT} \quad (1)$$

In this equation, C (µg/L) is the concentration of the PTE, IR (kg/n-day) is the ingestion rate of fruit (in Iran, it is 0.012 kg/n-day for children and 0.030 kg/n-day for adults)^[55], EF (days/year) is the exposure frequency (350 days/year), ED (year) is the exposure duration (children = 6 years and adults = 30 years), BW (kg) is the bodyweight (children = 15 kg and adults = 70 kg), and AT (days) is the average lifespan time (for noncarcinogenic risk, it is 2,190 days in children and 10,950 days in adults, and for carcinogenic risk, it is 25,550 days in children and 25,550 days in adults).

Noncarcinogenic Risk Assessment The

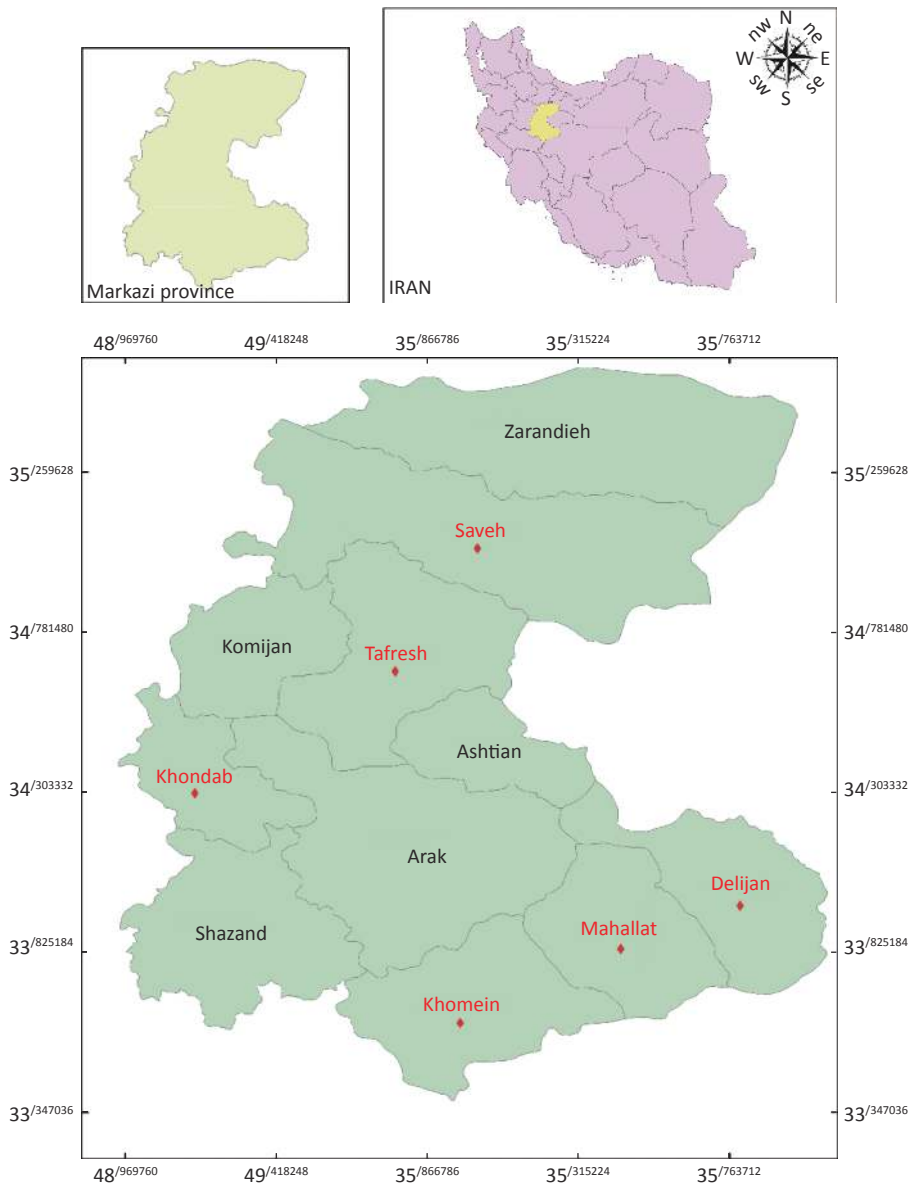


Figure 1. Map of the sampling localities at Markazi province.

noncarcinogenic risk due to the ingestion of fruit content of PTEs was evaluated using the THQ^[51,56,57] as follows:

$$THQ_i = \frac{EDI}{RfD} \quad (2)$$

In this equation, EDI [$\mu\text{g}/(\text{kg}\cdot\text{d})$] is the amount of PTE intake per kilogram BW that is presented as EDI and RfD [$\text{mg}/(\text{kg}\cdot\text{d})$], the reference dose of PTEs through the oral pathway. The oral RfD values for As (inorganic), Cd, and Hg (methylmercury) are 0.0003, 0.001, and 0.0001 [$\text{mg}/(\text{kg}\cdot\text{d})$] and unavailable, respectively^[58]. According to the World Health Organization (WHO) report, the tolerable daily intake (TDI) for Pb is 0.0036 [$\text{mg}/(\text{kg}\cdot\text{d})$]^[59].

To calculate the total THQ (TTHQ), the sum of THQ for each PTE was calculated using the following equation^[60,61]:

$$TTHQ = \sum_{i=1}^n THQ_i \quad (3)$$

Carcinogenic Risk Assessment

The carcinogenic risk (CR) was evaluated using the following equation^[62-64]:

$$CR = EDI \times CSF \quad (4)$$

In this equation, CSF is the cancer slope factor [$\text{mg}/(\text{kg}\cdot\text{d})^{-1}$], which is defined as a probable increase in cancer risk due to one substance through the oral pathway^[65,66].

According to EPA, the CSF through the oral pathway for As is 1.5 [$\text{mg}/(\text{kg}\cdot\text{d})^{-1}$]^[67]. The CSF values for Cd, Hg, and Pb are not available.

Monte Carlo Simulation Model Uncertainties can occur during a health risk assessment^[68]. If the used single-point value of PTE concentration for health risk assessment, high uncertainty can be observed. Therefore, a Monte Carlo simulation model was used as a probabilistic model to decrease uncertainties^[69,70]. The probabilistic risk assessment was conducted using the Crystal Ball software (version 11.1.2.4, Oracle, Inc., USA). The 95th percentile of THQ and CR was considered as a benchmark value that could endanger the health of consumers, and the number of repetitions was 10,000^[71].

Statistical Analysis

Two-way analysis of variance (ANOVA) was

performed to assess the effect of different variables on the toxic element concentrations in the tested fruits. ANOVA for each fruit was performed separately using variables such as the study site. A significant level of contamination in different fruits and water and soil of regions of sampling ($P \leq 0.05$). All statistical analyses were performed using SPSS v.24 (SPSS Inc., Chicago, IL). Each sample was analyzed three times ($n = 3$) for each PTE.

RESULTS

Method Validation

Calibration Curves Good linearity was noted according to the calibration curves plotted for four forms of PTEs in five types of fruits. The correlation factors for all the fruits were found to be in the range of 0.9975–0.9996 (Table 1). Figure 2 shows the spiked calibration curve for Hg in nectarine as a representative. Furthermore, an ICP-OES chromatogram of Hg analyzed in nectarine is

Table 1. Linear equations and regression coefficient of the calibration curves for PTEs (range 2.5–1,000 $\mu\text{g}/\text{kg}$)

Fruit samples	Metal	Equation	Regression coefficient
Nectarine	As	$y = 0.0005x - 0.008$	0.9985
	Cd	$y = 0.003x - 0.0248$	0.9995
	Hg	$y = 0.0009x - 0.0112$	0.9993
	Pb	$y = 0.0009x - 0.0048$	0.9996
Grape	As	$y = 0.003x + 0.0275$	0.9979
	Cd	$y = 0.001x - 0.0123$	0.9993
	Hg	$y = 0.0003x - 0.0047$	0.9993
	Pb	$y = 0.0014x + 0.0178$	0.9975
Plum	As	$y = 0.0012x - 0.0181$	0.9987
	Cd	$y = 0.0028x - 0.0362$	0.9992
	Hg	$y = 0.0016x - 0.0017$	0.9977
	Pb	$y = 0.0003x + 0.0005$	0.9992
Peach	As	$y = 0.001x - 0.0136$	0.9993
	Cd	$y = 0.0002x - 0.002$	0.9984
	Hg	$y = 0.0008x - 0.0062$	0.9986
	Pb	$y = 0.0008x - 0.0106$	0.9992
Apple	As	$y = 0.0008x - 0.0073$	0.9977
	Cd	$y = 0.0007x - 0.0081$	0.9978
	Hg	$y = 0.0019x - 0.0056$	0.9994
	Pb	$y = 0.0002x - 0.0024$	0.9985

depicted in Figure 3.

Recovery, LODs, and LOQs Table 2 show the average recoveries (%), relative standard deviations (%), LODs, and LOQs ($\mu\text{g}/\text{kg}$) obtained by ICP-OES analysis at six spiking levels ($n = 3$) in fruit, soil, and water samples. Using this method, the LODs for As, Cd, Hg, and Pb were calculated as 1, 0.05, 0.35, and 2 $\mu\text{g}/\text{kg}$, and the LOQs were 3.25, 0.42, 1.13, and 6.5 $\mu\text{g}/\text{kg}$ in all types of samples, respectively. In addition, the recovery of PTEs at these six spiking levels was in the range of 89.01%–126.65% in fruit, 89.11%–114.07% in soil, and 101.2%–132.8% in water samples. Regarding repeatability, all samples gave an RSD of < 20% with $n = 3$ at each spiking level (Table 2).

PTE Concentration in Fruit Samples

The concentration of PTEs showed a wide variation in the fruit samples as indicated by the average level of each PTE in Table 3. The order of mean concentration of PTEs in grape, peach, and nectarine was as follows: Pb > As > Hg > Cd. An

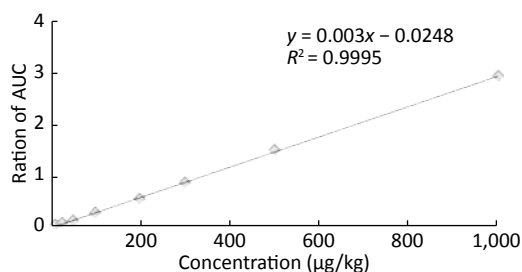


Figure 2. Spiked calibration curve for Hg in nectarine.

almost similar order was found for plum (Pb > Hg > Cd > As) and apple (Pb > Hg > As > Cd). These findings indicate that the lowest and highest mean levels of As (0.085 ± 0.057 and 1.2 ± 0.087 $\mu\text{g}/\text{kg}$, respectively) correlated with nectarine and grape samples, whereas for Cd, the corresponding values were 0.0096 ± 0.005 and 0.3 ± 0.007 $\mu\text{g}/\text{kg}$ for golden plum and grape, respectively. For Hg, the

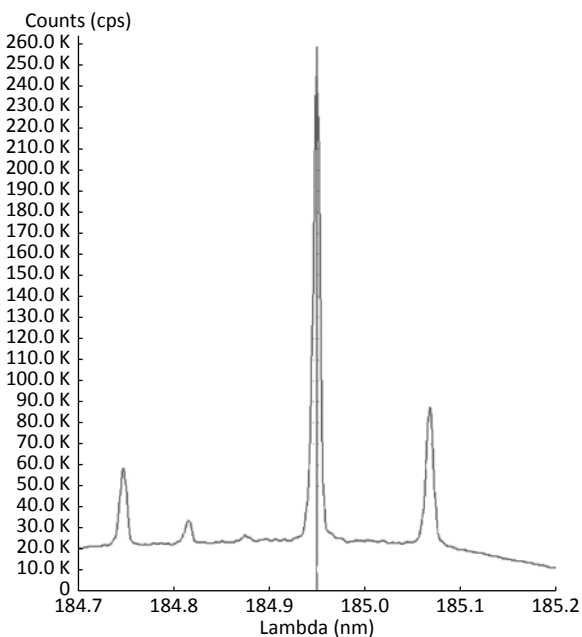


Figure 3. A representative ICP-OES chromatogram obtained for the Hg in nectarine.

Table 2. Average recoveries (%), relative standard deviations (RSD) (%), LOD and LOQ ($\mu\text{g}/\text{kg}$) obtained by ICP-OES analysis at 6 spiking levels ($n = 3$) in fruit, soil and water samples

Metal	Samples	Recovery ($n = 18$), Mean \pm SD (95% CI)	Range of RSDr ($n = 6$)	LOD	LOQ
As	Fruits	105.06 \pm 8.09 (93.7-116.2)	6.9–14.1	1	3.25
	Soil	98.78 \pm 2.58 (93.8-103.7)	10.62–19.21		
	Water	115.7 \pm 4.24 (111.2-128.3)	12.1–16.71		
Cd	Fruits	102.26 \pm 5.21 (93.8-112.5)	9.3–15.4	0.05	0.42
	Soil	99.71 \pm 3.64 (94.2-108.7)	11.86–17.32		
	Water	110.36 \pm 6.3 (101.2-119)	11.9–15.12		
Hg	Fruits	106.6 \pm 8.81 (102.13-126.65)	8.1–16.8	0.35	1.13
	Soil	106.6 \pm 4.54 (99.43-114.07)	10.86–18.11		
	Water	121.85 \pm 3.24 (119.54-132.8)	9.3–12.11		
Pb	Fruits	100.4 \pm 8.21 (89.01-111.55)	9.1–17.5	2	6.5
	Soil	94.37 \pm 2.87 (89.11-99.55)	9.86–17.12		
	Water	110.54 \pm 4.5 (105.64-123.17)	13.3–14.3		

corresponding values were 0.03 ± 0.005 and 0.91 ± 0.008 $\mu\text{g}/\text{kg}$ for golden plum and grape, and for Pb, the corresponding values were 1.2 ± 0.35 and 6.3 ± 1.11 $\mu\text{g}/\text{kg}$ for nectarine and apple, respectively.

A significant difference was observed in the concentration of PTEs among fruit samples collected from different regions (Table 3), and the levels of PTEs in the investigated samples were in the range from 0.10 ± 0.005 to 1.20 ± 0.08 $\mu\text{g}/\text{kg}$ for As, 0.01 ± 0.004 to 0.30 ± 0.006 $\mu\text{g}/\text{kg}$ for Cd, 0.03 ± 0.005 to 0.91 ± 0.008 $\mu\text{g}/\text{kg}$ for Hg, and 1.23 ± 0.34 to 6.27 ± 1.10 $\mu\text{g}/\text{kg}$ for Pb.

In general, the highest concentration of PTE was associated with apple samples, and the lowest one was noted among plum samples. The highest concentration of Pb was found in apple (6.27 ± 1.10 $\mu\text{g}/\text{kg}$) in Mahallat, and the highest levels of As, Cd, and Hg (1.20 ± 0.08 , 0.303 ± 0.006 , and 0.910 ± 0.008 $\mu\text{g}/\text{kg}$, respectively) were observed in grape samples in Khomein. However, the levels of Pb, Hg, As, and Cd was below the standard limit recommended by the WHO/Food and Agricultural Organization (FAO). The nectarine fruit samples collected from Saveh were contaminated with the lowest concentrations of As, Cd, and Pb (0.10 ± 0.005 , 0.01 ± 0.001 , and 1.23 ± 0.34 $\mu\text{g}/\text{kg}$, respectively). Plum samples also contained the

lowest concentration of Hg, 0.030 ± 0.005 $\mu\text{g}/\text{kg}$, in Mahallat. According to the Institute of Standards and Industrial Research of Iran (ISIRI), the maximum limit of Pb in fruits is 100 $\mu\text{g}/\text{kg}$, whereas a limit of 200 $\mu\text{g}/\text{kg}$ was proposed for grape^[72]. Therefore, the level of this toxic element in fruits is lower than the recommended ISIRI limit.

PTE Concentrations in Soil and Water Samples

The analysis results of water and soil samples collected from different sites in Markazi Province are presented in Table 4. The order of PTE levels in the soil and water samples can be summarized as $\text{Pb} > \text{As} > \text{Hg} > \text{Cd}$. There was a significant difference in the concentration of PTEs between fruits as well as soil and water samples collected from different regions. The levels of Pb, As, Hg, and Cd in the soil were in the range of 146.01 ± 6.7 to 318.72 ± 1.43 , 79.17 ± 1.07 to 263.9 ± 9.95 , 0.71 ± 0.06 to 2.13 ± 0.014 , and 0.20 ± 0.009 to 0.20 ± 0.01 $\mu\text{g}/\text{kg}$, respectively, and those in the water samples were 92.40 ± 3.66 to 102.9 ± 5.6 , 53.76 ± 6.7 to 171.4 ± 57.6 , 11.01 ± 1.11 to 44.4 ± 0.50 $\mu\text{g}/\text{kg}$, respectively. This implies that the concentrations of Pb and As in the soil were higher than those in the water samples, whereas those of Cd and Hg were higher in the water samples than in the soil samples.

Table 3. The mean level and standard deviation of different PTEs in different fruits in various sites of Markazi Province, Iran ($\mu\text{g}/\text{kg}\cdot\text{dw}$)

Location	Plum				Apple				Grape	
	As	Cd	Hg	Pb	As	Cd	Hg	Pb	As	Cd
Tafresh	0.21 ± 0.08^a	0.02 ± 0.010^{ab}	0.09 ± 0.006^a	4.01 ± 1.62^a	0.15 ± 0.03^b	0.01 ± 0.000^a	0.05 ± 0.007^b	1.99 ± 0.70^a	0.23 ± 0.10^{ab}	0.03 ± 0.006^a
Delijan	0.18 ± 0.04^a	0.02 ± 0.002^{ab}	0.09 ± 0.010^a	3.42 ± 1.14^a	0.29 ± 0.06^a	0.20 ± 0.003^c	0.11 ± 0.005^a	2.53 ± 1.15^a	0.18 ± 0.05^a	0.02 ± 0.001^a
Saveh	0.30 ± 0.02^a	0.03 ± 0.003^{ab}	0.13 ± 0.005^b	3.85 ± 0.90^a	0.17 ± 0.03^{ab}	0.02 ± 0.004^{ab}	0.06 ± 0.005^{bc}	2.55 ± 1.12^a	0.45 ± 0.05^b	0.05 ± 0.002^b
Khomein	0.26 ± 0.06^a	0.02 ± 0.080^b	0.10 ± 0.017^a	4.69 ± 1.23^a	0.28 ± 0.05^a	0.03 ± 0.007^b	0.10 ± 0.009^a	3.78 ± 1.22^a	1.20 ± 0.08^c	0.30 ± 0.006^c
Mahallat	0.14 ± 0.02^a	0.01 ± 0.004^a	0.03 ± 0.005^c	2.70 ± 1.08^a	0.19 ± 0.04^{ab}	0.02 ± 0.004^{ab}	0.08 ± 0.006^c	6.27 ± 1.10^b	0.51 ± 0.09^b	0.11 ± 0.017^d
Khondab	0.22 ± 0.08^a	0.03 ± 0.010^{ab}	0.09 ± 0.007^a	4.37 ± 1.20^a	0.15 ± 0.03^b	0.01 ± 0.004^a	0.06 ± 0.005^b	1.25 ± 0.29^a	0.35 ± 0.06^{ab}	0.03 ± 0.002^{ab}
Location	Grape		Peach		Nectarine					
	Hg	Pb	As	Cd	Hg	Pb	As	Cd	Hg	Pb
Tafresh	0.10 ± 0.006^a	2.49 ± 0.86^a	0.14 ± 0.01^a	0.01 ± 0.001^a	0.06 ± 0.005^a	2.77 ± 0.84^b	0.22 ± 0.025^{bc}	0.05 ± 0.004^c	0.07 ± 0.005^b	2.95 ± 0.83^b
Delijan	0.09 ± 0.005^a	1.71 ± 0.56^a	0.22 ± 0.05^{ac}	0.02 ± 0.002^{ab}	0.10 ± 0.005^b	5.64 ± 1.10^a	0.16 ± 0.015^a	0.02 ± 0.003^a	0.06 ± 0.005^a	1.70 ± 0.30^a
Saveh	0.19 ± 0.005^b	6.01 ± 0.83^b	0.18 ± 0.03^{ab}	0.02 ± 0.004^a	0.06 ± 0.005^a	1.57 ± 0.32^b	0.10 ± 0.005^{bc}	0.01 ± 0.001^b	0.04 ± 0.005^c	1.23 ± 0.34^b
Khomein	0.91 ± 0.008^c	2.98 ± 0.53^a	0.29 ± 0.07^{bc}	0.03 ± 0.005^b	0.12 ± 0.005^c	4.53 ± 0.68^{ab}	0.14 ± 0.034^{ac}	0.01 ± 0.005^a	0.05 ± 0.005^{ab}	1.61 ± 0.31^a
Mahallat	0.32 ± 0.032^d	2.55 ± 0.55^a	0.34 ± 0.07^c	0.04 ± 0.004^b	0.14 ± 0.005^d	5.11 ± 0.78^a	0.22 ± 0.060^a	0.02 ± 0.004^a	0.10 ± 0.005^a	2.89 ± 0.78^a
Khondab	0.16 ± 0.018^b	2.50 ± 0.32^a	0.19 ± 0.06^{ac}	0.02 ± 0.007^a	0.07 ± 0.009^a	1.67 ± 0.31^b	0.12 ± 0.015^{ab}	0.01 ± 0.002^{ab}	0.04 ± 0.005^b	1.97 ± 0.46^a

Note. Different letters in the same column indicate significant differences ($P < 0.05$).

Transfer Factor

The TF and the total mean TF in the fruits collected from the study sites are shown in Table 5. The order of the ability of all examined fruits to absorb PTEs was Cd > Hg > Pb > As. Although fruits can uptake the highest levels of Cd from the soil, they can also absorb the lowest level of As from the soil. Among the fruits, grape showed the highest TF level for Cd and Hg, whereas the lowest TF level was found for As in plum, apple, peach, and nectarine.

Risk Assessment

Estimated Daily Intake EDI values in adults due to contamination with As, Cd, Hg, and Pb were 1.32×10^{-7} , 2.84×10^{-8} , 9.45×10^{-8} , and 5.34×10^{-9} $\mu\text{g}/\text{kg}\cdot\text{d}$, respectively. EDI values in children due to the ingestion of As, Cd, Hg, and Pb through fruit consumption were 2.45×10^{-7} , 5.29×10^{-8} , 1.76×10^{-7} , and 9.97×10^{-9} $\mu\text{g}/\text{kg}\cdot\text{d}$, respectively (Table 6). EDI values in both adults and children were lower than the TDI for As (2 $\mu\text{g}/\text{kg}\cdot\text{d}$), Cd (1 $\mu\text{g}/\text{kg}\cdot\text{d}$), Hg (0.71 $\mu\text{g}/\text{kg}\cdot\text{d}$), and Pb (3.6 $\mu\text{g}/\text{kg}\cdot\text{d}$) recommended by the FAO/WHO/ food safety agency (FSA)^[56].

Noncarcinogenic and Carcinogenic Risks When the THQ and/or the TTHQ is > 1, there could be adverse health effects, but when the THQ is ≤ 1 , adverse health effects are not probable^[6,38]. The total mean value of THQ and HQ of PET and also, RfD are presented in Table 7.

In this context, the 95th percentiles of THQ in adults due to the ingestion of PTEs (As, Cd, and Hg) through the consumption of fruits were 7.75×10^{-7} , 4.46×10^{-8} , and 1.46×10^{-6} , respectively (Figure 4A-C); however, the corresponding values for the same PTEs in children were 1.38×10^{-6} , 8.02×10^{-8} , and 2.60×10^{-6} , respectively (Figure 5A-C). The rank

order of PTEs based on their THQ in both adults and children was Hg > As > Cd. The THQ of Hg was higher than that of other PTEs primarily due to the lower assigned RfD for Hg^[60]. The THQ in children was 1.78 times higher than that of adults due to their lower BW^[51-53]. Moreover, the TTHQ values in adults and children due to the ingestion of As, Cd, and Hg were 9.00×10^{-6} and 4.06×10^{-6} , respectively. The 95th percentiles of THQ and TTHQ in both adults and children were much lower than 1 (Figures 5 and 6) because of the low concentration of PTEs^[51-53] and the low ingestion rate of fruits^[55].

DISCUSSION

The accumulation of Pb in the human body can cause anemia and inhibit the activities of porphobilinogen synthase and ferrochelatase^[73]. In this study, the mean concentration of Pb among all fruit samples was found to be approximately 3.10 ± 1.58 $\mu\text{g}/\text{kg}$, which did not exceed the recommended limit (200 $\mu\text{g}/\text{kg}$). Consumption of food products contaminated with Hg can result in extensive corrosive damages to the gastrointestinal tract^[74] as well as in kidney function. However, the mean level of Hg among all the examined fruits was 0.122 ± 0.15 $\mu\text{g}/\text{kg}$, which was lower than the permissible limit (10 $\mu\text{g}/\text{kg}$)^[75]. Regarding As and Cd, it is known that the ingestion of As through food products can cause oxidative stress and abnormalities in chromosomes^[76] and Cd acts as a mitogen, which can further lead to cancer^[77]. However, the mean levels of these two PTEs were lower (0.259 ± 0.20 and 0.041 ± 0.06 $\mu\text{g}/\text{kg}$, respectively) than the standard limits proposed by the WHO (permissible limit for Cd and As in bulb and fruits is 50 $\mu\text{g}/\text{kg}$)^[78]. Furthermore, the ISIRI has set a limit of 50 $\mu\text{g}/\text{kg}$ for Cd in fruits^[72].

Table 4. The mean level of different PTEs contamination in water and soil samples in different place of Markazi province ($\mu\text{g}/\text{L}$ or kg)

Location	Water (mean \pm SD)				Soil (mean \pm SD)			
	As	Cd	Hg	Pb	As	Cd	Hg	Pb
Khomein	55.5 \pm 9.5 ^a	5.09 \pm 0.16 ^a	20.13 \pm 0.22 ^{ab}	101.6 \pm 3.3 ^{ab}	95.80 \pm 6.4 ^b	0.207 \pm 0.012 ^a	0.81 \pm 0.015 ^a	246.62 \pm 1.29 ^b
Khondab	54.16 \pm 7.2 ^a	5.30 \pm 0.53 ^a	20.27 \pm 0.45 ^{ac}	102.9 \pm 5.6 ^a	181.32 \pm 6.5 ^{ab}	0.2 \pm 0.012 ^a	2.13 \pm 0.014 ^b	318.72 \pm 1.43 ^c
Tafresh	54.09 \pm 8.8 ^a	5.27 \pm 0.47 ^a	20.27 \pm 0.47 ^{bc}	101.06 \pm 2.39 ^{ab}	181.54 \pm 1.24 ^{ab}	0.2 \pm 0.014 ^a	0.81 \pm 0.013 ^a	281.93 \pm 6.7 ^a
Delijan	54.06 \pm 6.4 ^a	5.26 \pm 0.46 ^a	20.29 \pm 0.42 ^a	101.7 \pm 3.6 ^{ab}	237.1 \pm 1.01 ^a	0.2 \pm 0.011 ^a	1.41 \pm 1.04 ^b	166.87 \pm 3.5 ^d
Saveh	53.7 \pm 6.7 ^a	5.28 \pm 0.48 ^a	44.4 \pm 0.50 ^e	101.2 \pm 2.7 ^{ab}	79.17 \pm 1.07 ^b	0.2 \pm 0.005 ^a	0.80 \pm 0.009 ^a	146.01 \pm 6.3 ^e
Mahallat	171.4 \pm 57.6 ^a	4.22 \pm 1.34 ^a	11.01 \pm 1.11 ^d	92.4 \pm 3.6 ^b	263.9 \pm 9.95 ^a	0.2 \pm 0.008 ^a	0.71 \pm 0.062 ^d	271.23 \pm 4.4 ^a

Note. Different letters in the same column indicate significant differences ($P < 0.05$).

The average concentrations of the 4 PTEs Cd, Hg, Pb, and As found in this study were consistent to the values reported by Banerje et al. (2010), especially in terms of the levels of Pb and Cd in fruits collected from India^[76]. Elbagermi et al. (2012) reported that the mean levels of Pb in potatoes and mangoes were approximately 20 and 1,824 µg/kg, respectively. The concentration of Cd ranged from 10 µg/kg in strawberries to 362 µg/kg in mangos. The authors concluded that the higher levels of PTE contamination in some fruits and vegetables can be associated with the presence of pollutants in irrigation water, farm soil, and pesticides, and/or pollution from traffic on the highways^[11]. Radwan and Salamaet (2006) reported that the levels of Pb, Cd, Cu, and Zn in some Egyptian fruits were 20-1,080, < LOD-80, 900-25,900, 1,010-11,200 mg/kg,

respectively^[37].

However, according to the findings of this study, the levels of PTEs in soil and water were high, whereas the amount of toxic metals in fruits cultivated in these soils and irrigated with these waters was low. Therefore, it can be stated that fruits cannot accumulate a high level of PTEs in their tissues. According to the WHO, the permissible limits of PTEs in soil are 2,000 µg/kg for Hg, 50,000 µg/kg for Pb, 3,000 µg/kg for Cd, and 20,000 µg/kg for As^[79], and the recommended levels in irrigation water are 5,000 µg/L for Pb, 10 µg/L for Cd, 100 µg/L for As^[80], and 1,000 µg/L for Hg^[81]. However, the contamination with PTEs among all soil and water samples was lesser than the permissible limit, and the level of Hg in irrigation water was higher than the WHO/FAO permissible limit, which can be correlated with industrial activities around the sampling zones as well as the highly observed air pollution in this province^[82]. Krishna et al. (2006) investigated the accumulation of PTEs in soil from an industrial area of Surat, Gujarat, Western India. They reported higher concentrations of Cu and Zn in the soil samples collected from the industrial areas^[80], and a significant correlation was found between the distance from the industrial areas and the levels of some of the PTEs in soil.

In addition to the total concentration of PTEs in soil, several parameters could influence the TF, and crops also have different abilities to uptake and accumulate PTEs^[83]. In this context, the reported variation in the level of TF among the different fruits can be related to the ability of trees to uptake PTEs, the element chemistry, the characteristics of the soil such as the pH, organic matter contents, fertilizer, and extension of the root system in the soil, and also the ability of storage tissues to absorb and accumulate PTEs^[84-85].

Mbong et al. (2014) investigated the level of PTEs in *Citrus reticulata* cultivated in urban and rural areas and found a higher TF for Pb in rural areas, whereas the corresponding TF values for Fe, Cd, and Cr in urban areas were twice higher than those in rural areas, which can be correlated to the phytoavailability of PTEs and also the high anthropogenic activities and disparities in soil properties^[83-84]. Mirecki et al. (2015) determined the levels of 4 PTEs in different plants and reported that the level of TF is related to the type of the plant and further found that sometimes with an increase in the level of PTEs in the soil, the level of TF decreases^[86]. In our study, the order of TF levels was Cd > Hg > Pb > As, whereas the order of PTEs in soil was Pb >

Table 5. The level of transfer factor for different PTEs in fruit samples (µg/kg)⁻¹

Fruits	As	Cd	Hg	Pb
Plum	0.001	0.113	0.074	0.016
Apple	0.001	0.238	0.063	0.013
Grape	0.003	0.439	0.242	0.013
Peach	0.001	0.118	0.083	0.015
Nectarine	0.001	0.114	0.050	0.009

Table 6. EDI in the adults and children due to ingestion fruits content of PTEs (µg/kg·d)

Consumer group	Heavy metal	EDI
Adults	As	1.32×10^{-7}
	Cd	2.84×10^{-8}
	Hg	9.45×10^{-8}
	Pb	5.34×10^{-9}
Children	As	2.45×10^{-7}
	Cd	5.29×10^{-8}
	Hg	1.76×10^{-7}
	Pb	9.97×10^{-9}

Table 7. The RfD and total mean value of THQ and HQ of metals

	As	Cd	Hg	Pb
HQ	0.6782	0.0329	0.3215	0.6962
THQ	0.7459	0.0380	0.3236	0.6914
RfD	0.0003	0.0010	0.0003	0.0035

As > Hg > Cd, which implies that at higher levels of As than Pb in soil, these fruit trees can absorb a higher level of Pb. According to the findings of Ghasemidehkordi et al. (2018), among different vegetables cultivated in Markazi Province, the level of As in vegetables in comparison with fruits in that area was higher than the safety limit^[9]. The survey the level Pb and Hg in vegetables demonstrated that vegetables can uptake higher concentration of Pb in tissues and also fruits in the present study can absorb and accumulate a higher level of Pb.

Regarding the EDI of toxic elements, according to Bagdatlioglu et al. (2010), the EDI values of Cd and Pb in all Turkish fruit samples (cherry and grape) were lower than the safety limit of provisional tolerable weekly intakes (PTWI)^[36]. The findings of

Guerra et al. (2012) indicated that the daily intake of PTEs such as As, Cd, Pb, Hg and Cr through fresh fruit consumption might not be risky for consumers because the values were below the recommended daily intake of these PTEs^[85]. Orisakwe et al. (2012) performed an assessment of health risk due to the ingestion of PTEs (Pb, Cd, and Hg) through the consumption of fruits (guava, banana, apple, bush butter, grape, orange, pawpaw, avocado, pineapple, local pear, tangerine, and bush mango) irrigated with wastewater in Owerri, Southeastern, Nigeria. Their results demonstrated that EDI for adults due to the ingestion of Pb via the consumption of apples was $1.4 \text{ (mg/kg-d)}^{-1}$, whereas the EDI values for the ingestion of Pb and Cd *via* grape were 2 and 0.9 mg/kg-d, respectively^[87].

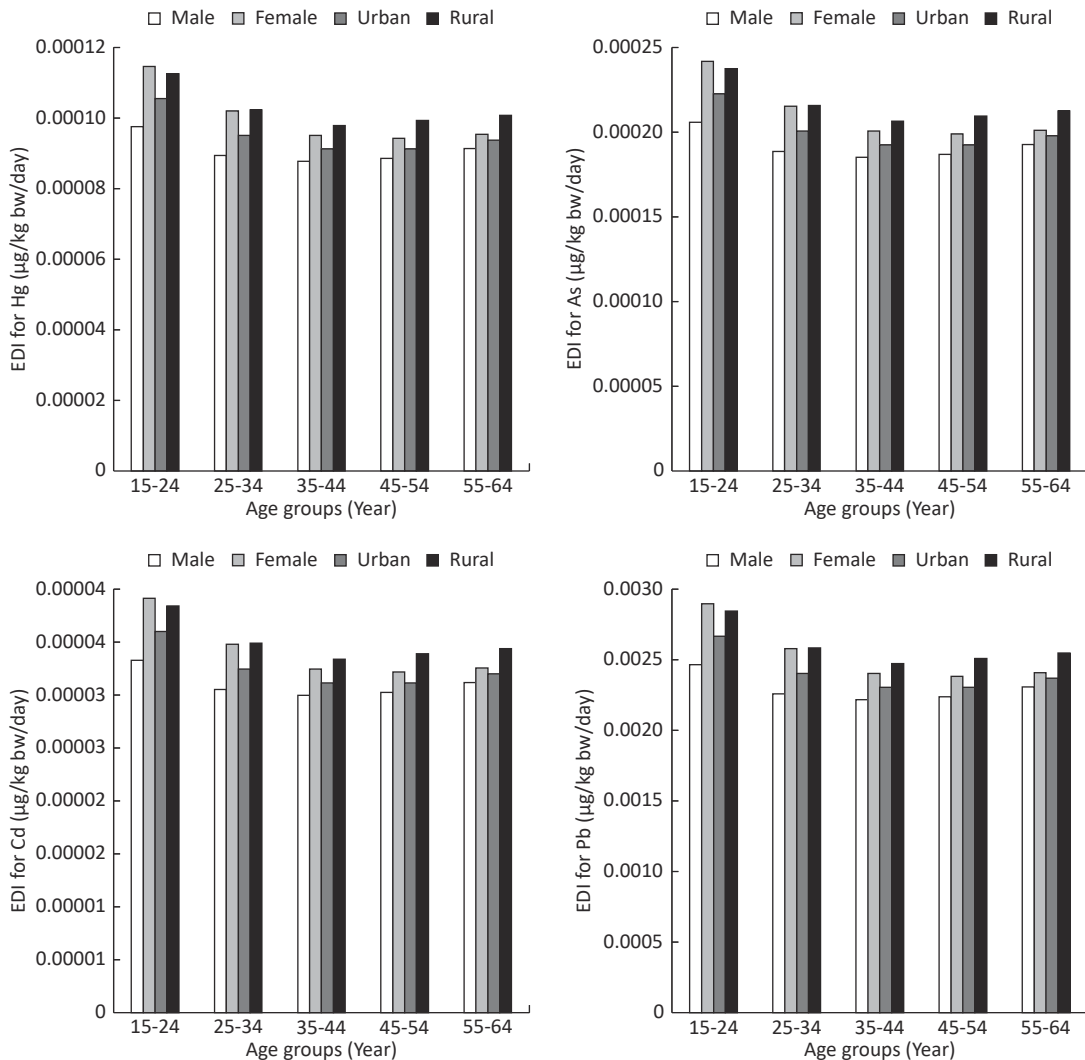


Figure 4. EDI induced by fruit intake content of potentially toxic elements (PTEs) in the male, female, urban, and rural areas of Iran.

Roba et al. (2016) also conducted an assessment of health risk due to the ingestion of fruits, including apple, grape, gooseberry, and blackcurrant, in urban and rural areas of Baia Mare mining area (Romania). Similar to the results of the current study, they reported that the THQ in all consumers due to Pb and Cd was < 1, indicating that the consumers are not at considerable health risk^[88].

The 95th percentiles of CR in adults and children due to the ingestion of As through fruit consumption were 3.44×10^{-10} and 1.09×10^{-9} , respectively

(Figure 6A and B, Figure 7A and B). The 95th percentile of CR was lower than 1.00×10^{-6} . Thus, consumers are not at considerable cancer risk due to As via oral ingestion.

CONCLUSION

This study evaluated the PTE concentrations in fruit, soil, and irrigation water samples in Markazi Province, along with an evaluation of the potential health risks associated with consumption of fruits.

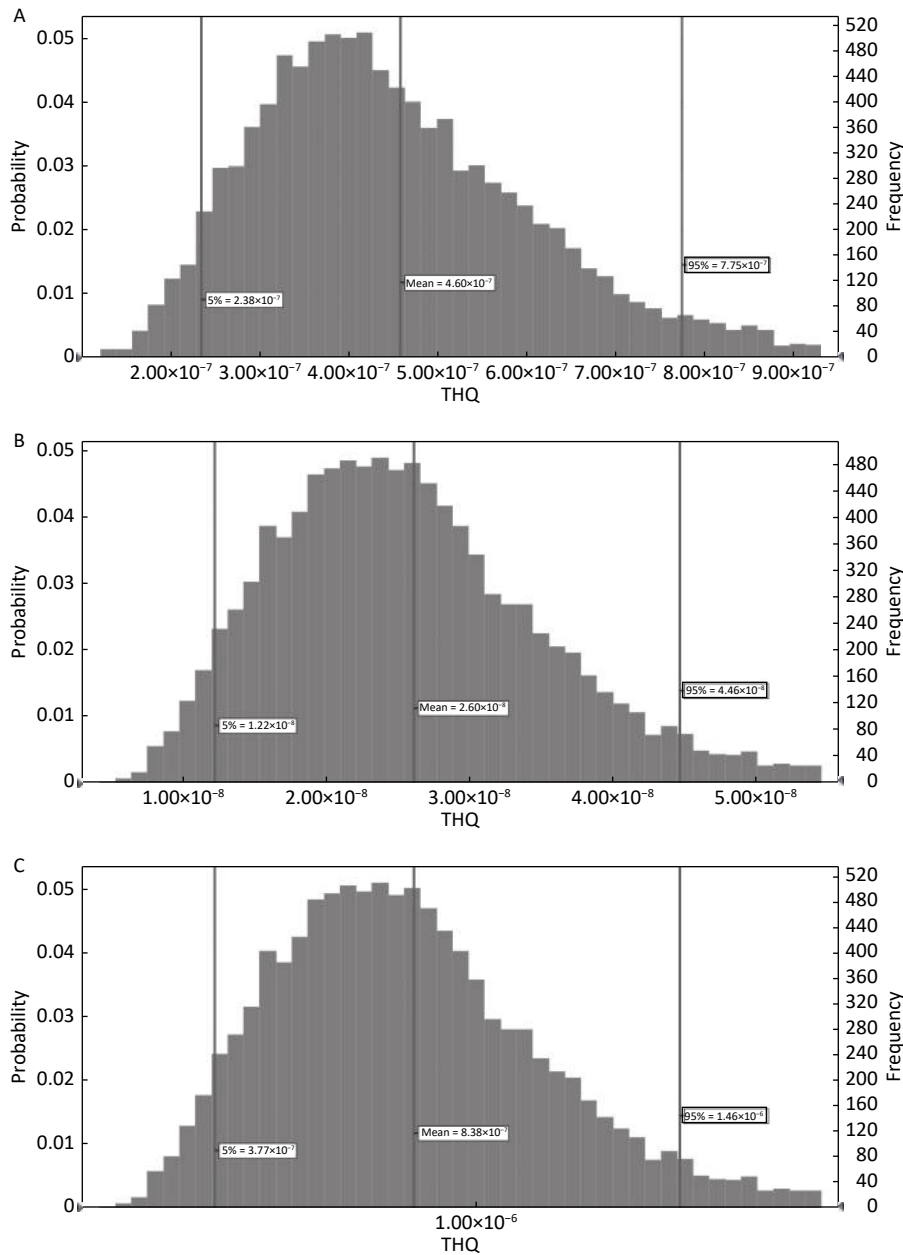


Figure 5. THQ of As (A), Cd (B), and Hg (C) in the adults fruits consumers.

The investigated metal concentrations varied widely in fruits and according to the site of sample collection, and the PTE levels were lower than the allowable concentration. There was a significant difference in the total mean concentration of Pb ($3.10 \pm 1.58 \mu\text{g}/\text{kg}$), Hg ($0.122 \pm 0.15 \mu\text{g}/\text{kg}$), Cd ($0.041 \pm 0.06 \mu\text{g}/\text{kg}$), and As ($0.25 \pm 0.20 \mu\text{g}/\text{kg}$) among the different fruits as well as the sampling sites. The 95th percentiles of THQ and TTHQ used in the health risk assessment of PTEs provide a

complete picture of the hazard index for human health, although the findings of this study suggest that the consumption of these fruits is free from risk in the investigated area. The exposed population (adults and children) was not at considerable noncarcinogenic (THQ and TTHQ < 1) and carcinogenic ($\text{CR} < 1.00 \times 10^{-6}$) risks due to the ingestion of PTEs through fruit consumption. Although the investigated PTEs in the fruit samples were in negligible levels, and the assessment of

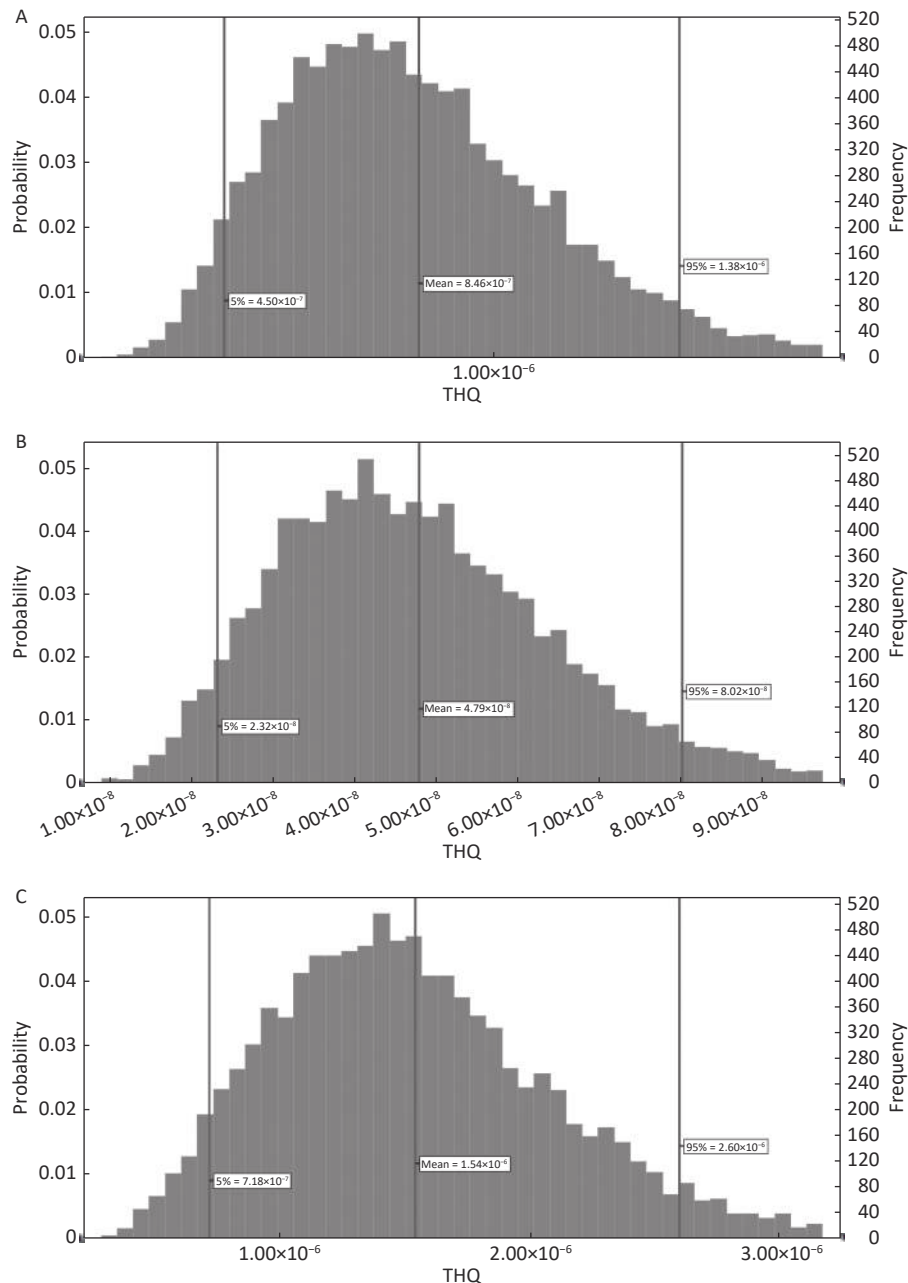


Figure 6. THQ of As (A), Cd (B), and Hg (C) in the children fruits consumers.

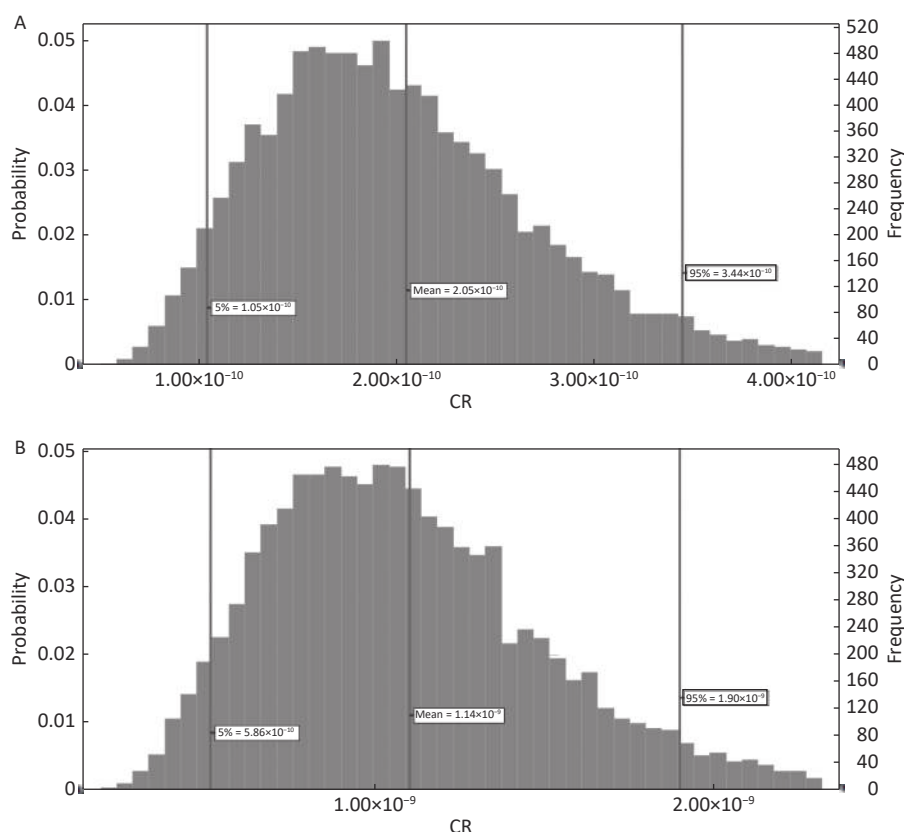


Figure 7. CR of As in the adults (A) and children (B) fruits consumers.

different factors was also within the standard limit. Regular monitoring of PTE levels in fruits in the industrial areas is recommended.

CONFLICT OF INTEREST

The authors declare that they have no conflict of interest.

ACKNOWLEDGMENT

Babak Peykarestan is grateful to the PNU for the financial support through the grant for faculty members. This study was approved and supported by the Payame Noor University (PNU), Tehran, Iran.

Received: March 26, 2019;

Accepted: August 26, 2019

REFERENCES

- Musilova J, Bystricka J, Vollmannova A, et al. Factors affecting heavy metals accumulation in potato tubers. *Ochr Śr Zasobów Nat*, 2015; 26, 54–9.
- Tajdar-oranj B, Shariatifar N, Alimohammadi M, et al. The concentration of heavy metals in noodle samples from Iran's market: probabilistic health risk assessment. *Environ Sci Pollut Res Int*, 2018; 25, 30928–37.
- Fathabad AE, Shariatifar N, Moazzen M, et al. Determination of heavy metal content of processed fruit products from Tehran's market using ICP-OES: a risk assessment study. *Food Chem Toxicol*, 2018; 115, 436–46.
- Fakhri Y, Saha N, Miri A, et al. Metal concentrations in fillet and gill of parrotfish (*Scarus ghobban*) from the Persian Gulf and implications for human health. *Food Chem Toxicol*, 2018; 118, 348–54.
- Rahmani J, Fakhri Y, Shahsavani A, et al. A systematic review and meta-analysis of metal concentrations in canned tuna fish in Iran and human health risk assessment. *Food Chem Toxicol*, 2018; 118, 753–65.
- Dadar M, Adel M, Nasrollahzadeh Saravi H, et al. Trace element concentration and its risk assessment in common kilka (*Clupeonella cultriventris caspia* Bordin, 1904) from southern basin of Caspian Sea. *Toxin Rev*, 2017; 36, 222–7.
- Gupta SK, Ansari FA, Nasr M, et al. Multivariate analysis and health risk assessment of heavy metal contents in foodstuffs of Durban, South Africa. *Environ Monit Assess*, 2018; 190, 151.
- Muamar A, Zouahri A, Tijane M, et al. Evaluation of heavy metals pollution in groundwater, soil and some vegetables irrigated with wastewater in the Skhirat region "Morocco". *JMES*, 2014; 5, 961–6.
- Ghasemidehkordi B, Malekiran AA, Nazem H, et al. Arsenic and Boron Levels in Irrigation Water, Soil, and Green Leafy Vegetables. *Int J Veg Sci*, 2018; 24, 115–21.
- Gupta SK, Roy S, Chabukdhara M, et al. Risk of Metal Contamination in Agriculture Crops by Reuse of Wastewater:

- An Ecological and Human Health Risk Perspective Water Conservation, Recycling and Reuse: Issues and Challenges. Springer, 2019; 55-79.
11. Elbagermi M, Edwards H, Alajtal A. Monitoring of heavy metal content in fruits and vegetables collected from production and market sites in the Misurata area of Libya. *ISRN Anal Chem*, 2012.
 12. Parviz M, Eshghi N, Asadi S, et al. Investigation of heavy metal contents in infusion tea samples of Iran. *Toxin Rev*, 2015; 34, 157-60.
 13. Pilehvarian AA, Malekirad AA, Bolandnazar NS, et al. Heavy metal bioaccumulation in different fish species in the coast of the Persian Gulf, Iran. *Toxin Rev*, 2015; 34, 215-9.
 14. Farahani S, Eshghi N, Abbasi A, et al. Determination of heavy metals in albumen of hen eggs from the Markazi Province (Iran) using ICP-OES technique. *Toxin Rev*, 2015; 34, 96-100.
 15. Kim HS, Kim YJ, Seo YR. An overview of carcinogenic heavy metal: molecular toxicity mechanism and prevention. *J Cancer Prev*, 2015; 20, 232.
 16. Fakhri Y, Khaneghah AM, Conti GO, et al. Probabilistic risk assessment (Monte Carlo simulation method) of Pb and Cd in the onion bulb (*Allium cepa*) and soil of Iran. *Environ Sci Pollut Res Int*, 2018; 25, 30894-906.
 17. Gupta SK, Chabukdhara M, Kumar P, et al. Evaluation of ecological risk of metal contamination in river Gomti, India: a biomonitoring approach. *Ecotoxicol Environ Saf*, 2014; 110, 49-55.
 18. Chabukdhara M, Nema AK, Gupta SK. Metal contamination in market based vegetables in an industrial region, India. *Bull Environ Contam Toxicol*, 2012; 89, 129-32.
 19. Tangahu BV, Abdullah S, Rozaimah S, et al. A review on heavy metals (As, Pb, and Hg) uptake by plants through phytoremediation. *Int J Chem React Eng*, 2011; 939161, 1-31.
 20. Tchounwou PB, Yedjou CG, Patlolla AK, et al. Heavy metal toxicity and the environment. *Exp Suppl*, 2012; 133-64.
 21. Jaishankar M, Tseten T, Anbalagan N, et al. Toxicity, mechanism and health effects of some heavy metals. *Interdiscip Toxicol*, 2014; 7, 60-72.
 22. Dinis MDL, Fiuza A. Exposure assessment to heavy metals in the environment: measures to eliminate or reduce the exposure to critical receptors Environmental Heavy Metal Pollution and Effects on Child Mental Development. Springer, Dordrecht, 2011; 27-50.
 23. Alissa EM, Ferns GA. Heavy metal poisoning and cardiovascular disease. *J Toxicol*, 2011.
 24. Järup L. Hazards of heavy metal contamination. *Br Med Bull*, 2003; 68, 167-82.
 25. Huang YH, Shih CM, Huang CJ, et al. Effects of cadmium on the structure and enzymatic activity of Cu, Zn-SOD and oxidative status in neural cells. *J Cell Biochem*, 2006; 98, 577-89.
 26. Rapheal O, Adebayo KS. Assessment of trace heavy metal contaminations of some selected vegetables irrigated with water from River Benue within Makurdi Metropolis, Benue State Nigeria. *Adv Appl Sci Res*, 2011; 2, 590-601.
 27. Wuana RA, Okieimen FE. Heavy metals in contaminated soils: a review of sources, chemistry, risks and best available strategies for remediation. *ISRN Ecol*, 2011.
 28. Bernhoft RA. Mercury toxicity and treatment: a review of the literature. *J Environ Public Health*, 2012; 460508.
 29. Rice KM, Walker Jr, Wu M, et al. Environmental mercury and its toxic effects. *J Prev Med Public Health*, 2014; 47, 74-83.
 30. Hessel L. Mercury in vaccines. *Bull Acad Natl Med*, 2003; 187, 1501-10.
 31. Ferreira MA, Barros AA. Determination of As (III) and arsenic (V) in natural waters by cathodic stripping voltammetry at a hanging mercury drop electrode. *Anal Chim Acta*, 2002; 459, 151-9.
 32. Mazumder DG. Chronic arsenic toxicity and human health. *Indian J Med Res*, 2008; 128, 436-47.
 33. Saha J, Dikshit A, Bandyopadhyay M, et al. A review of arsenic poisoning and its effects on human health. *Crit Rev Env Sci Tec*, 1999; 29, 281-313.
 34. Mandal BK, Suzuki KT. Arsenic round the world: a review. *Talanta*, 2002; 58, 201-35.
 35. Jomova K, Jenisova Z, Feszterova M, et al. Arsenic: toxicity, oxidative stress and human disease. *J Appl Toxicol*, 2011; 31, 95-107.
 36. Bagdatlioglu N, Nergiz C, Ergonul PG. Heavy metal levels in leafy vegetables and some selected fruits. *J Verbrauch Lebensm*, 2010; 5, 421-8.
 37. Ghasemidehkordi B, Malekirad AA, Nazem H, et al. Tin Levels in Perennial and Annual Green Leafy Vegetables. *Int J Veg Sci*, 2017; 23, 340-5.
 38. Ghasemidehkordi B, Nazem H, Malekirad A, et al. Human health risk assessment of aluminium via consumption of contaminated vegetables. *Qual Assur Saf Crops*, 2018; 10, 115-23.
 39. Ghasemidehkordi B, Malekirad AA, Nazem H, et al. Concentration of lead and mercury in collected vegetables and herbs from Markazi province, Iran: a non-carcinogenic risk assessment. *Food Chem Toxicol*, 2018; 113, 204-10.
 40. Rezaei M, Dastjerdi HA, Jafari H, et al. Assessment of dairy products consumed on the Arakmarket as determined by heavy metal residues. *Health*, 2014; 6, 323.
 41. Bortey-Sam N, Nakayama S, Akoto O, et al. Accumulation of heavy metals and metalloid in foodstuffs from agricultural soils around Tarkwa area in Ghana, and associated human health risks. *Int J Environ Res Public Health*, 2015; 12, 8811-27.
 42. Mao J, Liu X, Chen B, et al. Determination of heavy metals in soil by inductively coupled plasma mass spectrometry (ICP-MS) with internal standard method. *Electron Sci Technol Appl*, 2017; 4, 1.
 43. Shakya P, Malla Khwaounjoo N. Heavy Metal Contamination in Green Leafy Vegetables Collected From Different Market Sites of Kathmandu and Their Associated Health Risks. *Scientific World*, 2013; 11, 37-42.
 44. Ali MM, Ali ML, Islam MS, et al. Preliminary assessment of heavy metals in water and sediment of Karnaphuli River, Bangladesh. *Environ Nanotechnol. Monit Manage*, 2016; 5, 27-35.
 45. Chary NS, Kamala C, Raj D. Assessing the risk of heavy metals from consuming food grown on sewage irrigated soils and food chain transfer. *Ecotoxicol Environ Saf*, 2008; 69, 513-24.
 46. Rezaei M, Shariatifar N, Shoeibi S, et al. Simultaneous determination of residue from 58 pesticides in the wheat flour consumed in Tehran, Iran by GC/MS. *Iran J Pharm Res*, 2017; 16, 1048.
 47. Nouri J, Khorasani N, Lorestani B, et al. Accumulation of heavy metals in soil and uptake by plant species with phytoremediation potential. *Environ Earth Sci*, 2009; 59, 315-23.
 48. Fakhri Y, Mousavi Khaneghah A, Hadiani MR, et al. Non-carcinogenic risk assessment induced by heavy metals content of the bottled water in Iran. *Toxin Rev*, 2017; 36, 313-21.
 49. Adel M, Dadar M, Fakhri Y, et al. Heavy metal concentration in muscle of pike (*Esox lucius Linnaeus, 1758*) from Anzali international wetland, southwest of the Caspian Sea and their consumption risk assessment. *Toxin Rev*, 2016; 35, 217-23.
 50. Abtahi M, Fakhri Y, Oliveri Conti G, et al. Heavy metals (As, Cr, Pb, Cd and Ni) concentrations in rice (*Oryza sativa*) from Iran and associated risk assessment: a systematic review. *Toxin*

- Rev, 2017; 36, 331–41.
51. Chabukdhara M, Gupta SK, Kotecha Y, et al. Groundwater quality in Ghaziabad district, Uttar Pradesh, India: Multivariate and health risk assessment. *Chemosphere*, 2017; 179, 167–78.
 52. Statista. Per capita consumption of fruit juice and nectar worldwide in 2012 and 2013, by country (in liters). <https://www.statista.com/statistics/263205/per-capita-consumption-of-fruit-juice-worldwide-by-country/>. [2014-12-31].
 53. Shahsavani A, Fakhri Y, Ferrante M, et al. Risk assessment of heavy metals bioaccumulation: fished shrimps from the Persian Gulf. *Toxin Rev*, 2017; 36, 322–30.
 54. Zafarzadeh A, Bay A, Fakhri Y, et al. Heavy metal (Pb, Cu, Zn, and Cd) concentrations in the water and muscle of common carp (*Cyprinus carpio*) fish and associated non-carcinogenic risk assessment: Alagol wetland in the Golestan, Iran. *Toxin Rev*, 2017; 1–7.
 55. USEPA. Regional Screening Level (RSL) Summary Table (TR=1E-06, HQ=1) November 2017. <https://www.epa.gov/risk/regional-screening-levels-rsls-generic-tables>. [2019-11-20].
 56. WHO. Evaluation of Certain Food Additives and Contaminants (Forty-first Report of the Joint FAO/WHO Expert Committee on Food Additives). Tech Report Serie, 1993; 837.
 57. USEPA. Quantitative Risk Assessment Calculations, 2015. <https://www.epa.gov/sites/production/files/2015-05/documents/13.pdf>. [2015-5-1].
 58. USEPA. United state environmental protection agency. Quantitative Risk Assessment Calculations, 2016. <https://www.epa.gov/sites/production/files/2015-05/documents/13.pdf>
 59. WHO. (World Health Organization), Evaluation of Certain Food Additives and Contaminants (Forty-first Report of the Joint FAO/WHO Expert Committee on Food, 2011.
 60. Kim HH, Lim YW, Yang JY, et al. Health risk assessment of exposure to chlorpyrifos and dichlorvos in children at childcare facilities. *Sci Total Environ*, 2013; 444, 441–50.
 61. USEPA. Supplementary guidance for conducting health risk assessment of chemical mixtures. Risk Assessment Forum Technical Panel. Office EPA/630/R-00/002, 2000.
 62. USEPA. U.S. Environmental Protection Agency, Supplemental guidance for assessing susceptibility from early-life exposure to carcinogens, 2016. <http://www3.epa.gov/airtoxics/childrens-supplement-final.pdf>. [2016-2-21].
 63. Huang CL, Bao LJ, Luo P, et al. Potential health risk for residents around a typical e-waste recycling zone via inhalation of size-fractionated particle-bound heavy metals. *J Hazard Mater*, 2016; 317, 449–56.
 64. USEPA. Methodology for Deriving Ambient Water Quality Criteria for the Protection of Human Health, EPA-822-B-00-004, Washington, DC, 2000, 185.
 65. Chen MJ, Hsu HT, Lin CL, et al. A statistical regression model for the estimation of acrylamide concentrations in French fries for excess lifetime cancer risk assessment. *Food Chem Toxicol*, 2012; 50, 3867–76.
 66. Ru QM, Feng QH, JZ. Risk assessment of heavy metals in honey consumed in Zhejiang province, southeastern China. *Food Chem Toxicol*, 2013; 53, 256–62.
 67. van der Voet H, de Mul A, van Klaveren JD. A probabilistic model for simultaneous exposure to multiple compounds from food and its use for risk-benefit assessment. *Food Chem Toxicol*, 2007; 45, 1496–506.
 68. Qu CS, Ma ZW, Yang J, et al. Human exposure pathways of heavy metals in a lead-zinc mining area, Jiangsu Province, China. *PLoS One*, 2012; 7, 46793.
 69. Wani AL, Ara A, Usmani JA. Lead toxicity: a review. *Interdiscip Toxicol*, 2015; 8, 55–64.
 70. Park JD, Zheng W. Human exposure and health effects of inorganic and elemental mercury. *J Prev Med Public Health*, 2012; 45, 344.
 71. Hu B, Jia X, Hu J, et al. Assessment of heavy metal pollution and health risks in the soil-plant-human system in the Yangtze River delta, China. *Int J Environ Res Public Health*, 2017; 14, 1042.
 72. ISIRI. Food & Feed-Maximum limit of heavy metals. Institute of Standards and Industrial Research of Iran, 2013; 12968-1.
 73. Tantry BA, Shrivastava D, Taher I, et al. Arsenic exposure: mechanisms of action and related health effects. *J Environ Anal Toxicol*, 2015; 5, 1.
 74. Sharma H, Rawal N, Mathew BB. The characteristics, toxicity and effects of cadmium. *Int J Nanosci*, 2015; 3, 1–9.
 75. Sharma A, Katnoria JK, Nagpal AK. Heavy metals in vegetables: screening health risks involved in cultivation along wastewater drain and irrigating with wastewater. *Springer Plus*, 2016; 5, 488.
 76. Banerjee D, Bairagi H, Mukhopadhyay S, et al. Heavy metal contamination in fruits and vegetables in two districts of West Bengal, India. *EJEAFChe*, 2010; 9, 1423–32.
 77. Radwan MA, Salama AK. Market basket survey for some heavy metals in Egyptian fruits and vegetables. *Food Chem Toxicol*, 2006; 44, 1273–8.
 78. Yayra Fosu-Mensah B, Addae E, Yirenya-Tawiah D, et al. Heavy metals concentration and distribution in soils and vegetation at Korle Lagoon area in Accra, Ghana. *Cogent Environ Sci*, 2017; 3, 1405887.
 79. Mousavi SR, Balali-Mood M, Riahi-Zanjani B, et al. Concentrations of mercury, lead, chromium, cadmium, arsenic and aluminum in irrigation water wells and wastewaters used for agriculture in Mashhad, northeastern Iran. *Int J Occup Environ Med*, 2013; 4, 80–6.
 80. Krishna A, Govil P. Soil contamination due to heavy metals from an industrial area of Surat, Gujarat, Western India. *Environ Monit Assess*, 2007; 124, 263–75.
 81. Amusan A, Ige D, Olawale R. Characteristics of soils and crops' uptake of metals in municipal waste dump sites in Nigeria. *J Hum Ecol*, 2005; 17, 167–71.
 82. Laço A, Radulov I, Berbeca A, et al. The transfer factor of metals in soil-plant system. *Res J Agric Sci*, 2012; 44, 67–72.
 83. Mbong E, Akpan E, Osu S. Soil-plant heavy metal relations and transfer factor index of habitats densely distributed with *Citrus reticulata* (tangerine). *RJET*, 2014; 3, 61–5.
 84. Bortey-Sam N, Nakayama SM, Ikenaka Y, et al. Human health risks from metals and metalloid via consumption of food animals near gold mines in Tarkwa, Ghana: Estimation of the daily intakes and target hazard quotients (THQs). *Ecotoxicol Environ Saf*, 2015; 111, 160–7.
 85. Guerra F, Trevizam AR, Muraoka T, et al. Heavy metals in vegetables and potential risk for human health. *Scientia Agricola*, 2012; 69, 54–60.
 86. Mirecki N, Agic R, Sunic L, et al. Transfer factor as indicator of heavy metals content in plants. *Fresenius Environ Bull*, 2015; 24, 4212–9.
 87. Orisakwe OE, Nduka JK, Amadi CN, et al. Heavy metals health risk assessment for population via consumption of food crops and fruits in Owerri, South Eastern, Nigeria. *Chem Cent J*, 2012; 6, 77.
 88. Roba C, Roşu C, Piştea I, et al. Heavy metal content in vegetables and fruits cultivated in Baia Mare mining area (Romania) and health risk assessment. *Environ Sci Pollut Res Int*, 2016; 23, 6062–73.