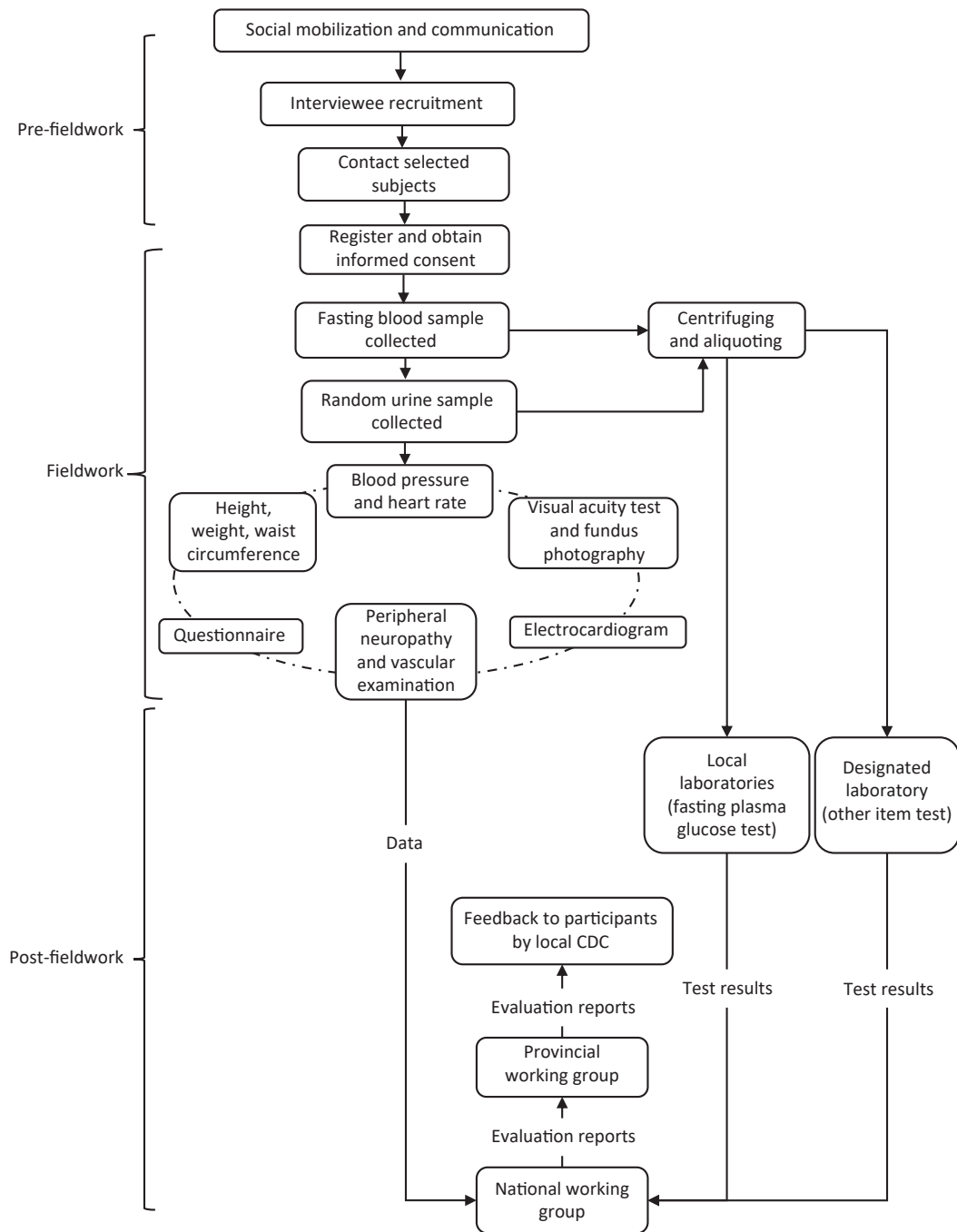




Supplementary Figure S1. The front cover of the technique manuals.



Supplementary Figure S2. Geographical distribution of the 122 study sites in the 31 provinces, autonomous regions, and municipalities of mainland China.



Supplementary Figure S3. Flowchart of fieldwork.

Supplementary Table S1. Summary of the questionnaire

Part	Item	Content
1	Demographic and socioeconomic information	Patient ID, Sex, Date of birth, Race, Education, Occupation, Residence, Income and expenses, Marriage status, and Medical insurance
2	Smoking status	Current cigarette consumption (frequency, duration), Cigarette cessation, and Passive smoking
3	Alcohol, tea, and coffee consumption	Current alcohol consumption (frequency, degree, duration), Alcohol cessation, Tea consumption (frequency, species), and Coffee consumption (frequency)
4	Diet	Fourteen kinds of food: grains (rice, noodles, steamed bread, etc.), whole grains (corn, buckwheat, millet, etc.), potatoes (russet potato, yam, yuca root, sweet potato, etc.), soybean products, fresh vegetables, fresh fruits, dairy foods, red meat (pork, beef, lamb, etc.), poultry (chicken, duck, etc.), seafood, eggs, nuts, sugar-sweetened beverages, and fresh juices
5	Physical activity and sleep	Work, agriculture, and housework; Transit; Recreational activities and exercise; Total/leisure-time sedentary behavior; and Sleep behavior
6	Family history	Family history of hypertension, diabetes, obesity, coronary heart disease, stroke, tumor, and dyslipidemia
7	Medical history	Medical history of diabetes, hypertension, coronary heart disease, stroke, dyslipidemia, urinary system diseases, chronic hepatitis, hepatocirrhosis, and malignancy (date of diagnosis and/or treatment of the disease)
8	Medication	Current medication for diabetes, hypertension, coronary heart disease, stroke, dyslipidemia, and other diseases (names of medicines taken)
9	Weight and its control	Frequency of weight measuring and weight change in a year
10	Menstrual and obstetrical history ^a	Age at first menstruation, Menopausal status, Age at menopause, History of gestational hypertension, gestational diabetes, and ovarian surgery

Note. ^aOnly applicable for female participants.

Supplementary Table S2. Summary of physical examinations

Item	No. of measurements	Equipment used	Precision
Height (cm)	1	TGZ height gauge	0.1
Weight (kg)	1	TANITA HD-390 body weight scale	0.1
Waist circumference (cm)	2	1.5 Meter soft retractable measuring tape	0.1
Blood pressure (mmHg)	3	Omron blood pressure monitor ^a	1
Heart rate (beats/min)	3	Omron blood pressure monitor ^a	1

Note. ^aModels included HBP-1300, HEM-7207, HEM-7071, HEM-770A, HEM-7118, HEM-7133, HEM-7130, and HEM-8102A.

Supplementary Table S3. Summary of laboratory tests

Item	Method	Equipment used	Precision
Blood			
FPG (mmol/L) ^a	Glucose oxidase or hexokinase method	Equipment available in local laboratories ^a	0.01
HbA1c (%) ^b	High-performance liquid chromatography	BioRad D10 Hemoglobin Analyzer	0.1
Lipid (mmol/L) ^{b,c}	Enzymatic method	Roche cobas c701/702	0.01
Creatinine (μmol/L) ^b	Enzymatic method	Roche cobas c701/702	1
Urine			
Urinary albumin (mg/L)	Immunoturbidimetry	Roche cobas c701/702	0.1
Urinary creatine (μmol/L)	Enzymatic method	Roche cobas c701/702	1

Note. ^aFPG was measured by local laboratories with a unified quality control plan, as follows. Before carrying out fasting blood glucose testing, each laboratory was required to verify the testing system using uniformly-issued serum chemistry controls: 1) repeatability precision verification [the staff aliquoted 20 copies of the low-, medium-, and high-concentration quality control products, performed repeated tests (a total of 60 measurement data), and the verification pass standard was that the coefficients of variation (CV) of each concentration were < 2.5%]; and 2) intermediate precision verification [the staff took one quality control product with low, medium, and high concentrations, tested once every hour, repeated four times a day for five days (20 data for each concentration; a total of 60 data), and the verification standards included that for each concentration, the means and the CVs of the daily test results were within the ranges declared by the manufacturer]. During the test period, each laboratory was required to perform real-time quality control using quality control products. On each experimental day, the staff needed to test quality controls in three levels (before, during, and after testing). If the test results met the following conditions, they were considered to be under quality control: 1) the test results of a specific concentration level cannot exceed the target value ± 3 standard deviations (SDs) within one day or exceed the target value ± 2 SDs for two consecutive days; and 2) the test results of two specific concentration levels cannot exceed the target value by ± 2 SDs at the same time within one day. After the test, we summarized the quality control results of each laboratory. The data showed that the CVs were all < 3.3% (0.05%–3.18%) and the cumulative target values [hexokinase method (level 1, 3.06–3.62; level 2, 6.08–7.02; level 3, 18.40–21.02); glucose oxidase method (level 1, 3.11–3.39; level 2, 6.16–6.75; level 3, 18.60–20.55)] were within the range declared by the manufacturer [hexokinase method (level 1, 2.89–3.68; level 2, 5.94–7.13; level 3, 18.20–22.20); glucose oxidase method (level 1, 2.66–3.91; level 2, 5.54–7.58; level 3, 17.40–23.80)]. ^bHbA1c, lipids, and creatinine, as well as urinary albumin and creatinine, were centrally measured and HbA1c was measured with a national glycohemoglobin standardization program-certified method. ^cLipid test included triglycerides, total cholesterol, high-density lipoprotein-cholesterol, and low-density lipoprotein-cholesterol. FPG, fasting plasma glucose; HbA1c, hemoglobin A1c.

Supplementary Table S4. Summary of special examinations

Item	Description	Equipment used
Electrocardiogram	A standard resting 12-lead electrocardiogram was performed and additional leads were completed if necessary	Six-channel automatic electrocardiography (Mode FX-8222T)
Visual acuity test	It was measured at a distance of five meters with each eye tested separately	Log-MAR visual acuity chart
Diabetic retinopathy	Two 45-degree color fundus photographs were taken for each eye; one was centered on the optic disc and the other on the macula	Digital non-mydratric retinal camera (Canon CR-2 or TRC-NW400)
Peripheral neuropathy	An inspection of the feet and evaluation of ankle reflexes, pinprick, and vibration, pressure, and temperature sensations were carried out	Diabetic foot sensory examination kit, including 10 g monofilament, Tip-Therm, 128-Hz tuning fork, and a reflex hammer with sensory needle
Peripheral arterial disease	Peripheral vascular lesions were assessed by palpation of the dorsalis pedis, posterior tibial, and popliteal arteries, and by the Edinburgh intermittent claudication questionnaire	/

Supplementary Table S5. Physical activity classification

Work, agriculture, and housework	Recreational activities and exercise	Sedentary behavior
<p>Moderate-intensity physical activity^a</p> <p>Examples: Cleaning (such as vacuuming, mopping the floor, polishing the floor, wiping the table, sweeping the floor, ironing, etc.), Washing (brushing carpet, hand laundry, etc.), Gardening work (such as watering, soiling, fertilizing, etc.), Manual milking, Hand-weaving, Woodworking (carve, sawing softwood, etc.), Using tools such as mills and shovels to mix cement, sand, etc., Carrying/moving moderate loads (< 20 kg), Lifting water, Stocking livestock, etc.</p>	<p>Moderate-intensity physical activity^a</p> <p>Examples: Bicycling, Jogging, Dancing, Riding, Tai Chi, Yoga, Pilates, Yangge, Dance, etc.</p>	<p>Sitting, leaning, or lying outside of sleep time</p> <p>Examples: Working, Studying, Reading, Watching TV, Using a computer, Riding a motor vehicle, Resting, etc.</p>
<p>High-intensity physical activity^b</p> <p>Examples: Forestry work (cutting and moving timber), Sawing hardwood, Cultivating land, Sowing, Harvesting crops (wheat, rice, sugar cane, etc.), Gardening work (excavation, heavy loads, etc.), Artificial grinding (using tweezers or stone grinders, etc.), Construction work (moving building materials, building walls, etc.), Carrying/moving heavy loads (> 20 kg), Fitness coaching (such as spinning, aerobics, yoga, etc.), Courier work (on foot or by bike), Pulling, picking up rickshaws, pushing wheelbarrows, operating jackhammers, etc.</p>	<p>High-intensity physical activity^b</p> <p>Examples: Long-distance running, Playing football, Playing soccer, Playing tennis, Spinning/cycling, Lifting dumbbells, barbells, Ballet, Swimming, etc.</p>	

Note. ^aPhysical activity requires a moderate amount of effort and noticeably accelerates the heart rate. ^bPhysical activity requires a large amount of effort and causes rapid breathing and a substantial increase in heart rate.

Supplementary Table S6. China National Diabetic Chronic Complications Study Group

Name	Affiliation
Xiaohui Guo	Department of Endocrinology, Peking University First Hospital, Beijing, China
Kai Wu	Department of Endocrinology, Peking University First Hospital, Beijing, China
Liming Chen	Tianjin Metabolic Diseases Hospital & Tianjin Institute of Endocrinology, Tianjin Medical University, Tianjin, China
Demin Liu	Tianjin Metabolic Diseases Hospital & Tianjin Institute of Endocrinology, Tianjin Medical University, Tianjin, China
Guangyao Song	Department of Endocrinology, Hebei General Hospital, Shijiazhuang, Hebei, China
Linyi Shu	Department of Endocrinology, Hebei General Hospital, Shijiazhuang, Hebei, China
Jing Yang	Department of Endocrinology, The First Hospital of Shanxi Medical University, Taiyuan, Shanxi, China
Yan Wang	Department of Endocrinology, The First Hospital of Shanxi Medical University, Taiyuan, Shanxi, China
Dongmei Li	Department of Endocrinology, Inner Mongolia People's Hospital, Hohhot, Inner Mongolia, China
Qiansha Guo	Department of Endocrinology, Inner Mongolia People's Hospital, Hohhot, Inner Mongolia, China
Ling Li	Department of Endocrinology, Shengjing Hospital, China Medical University, Shenyang, Liaoning, China
Na Wu	Department of Endocrinology, Shengjing Hospital, China Medical University, Shenyang, Liaoning, China
Yadong Sun	Department of Endocrinology, Jilin Province People's Hospital, Changchun, Jilin, China
Huifang Cheng	Department of Endocrinology, Jilin Province People's Hospital, Changchun, Jilin, China
Hongyu Kuang	Department of Endocrinology, The First Affiliated Hospital of Harbin Medical University, Harbin, Heilongjiang, China
Huijuan Zhang	Department of Endocrinology, The First Affiliated Hospital of Harbin Medical University, Harbin, Heilongjiang, China
Weiping Jia	Department of Endocrinology and Metabolism, Shanghai Jiao Tong University Affiliated Sixth People's Hospital, Shanghai Diabetes Institute, Shanghai Key Laboratory of Diabetes Mellitus, Shanghai Clinical Center for Diabetes, Shanghai Key Clinical Center for Metabolic Disease, Shanghai, China
Xuhong Hou	Department of Endocrinology and Metabolism, Shanghai Jiao Tong University Affiliated Sixth People's Hospital, Shanghai Diabetes Institute, Shanghai Key Laboratory of Diabetes Mellitus, Shanghai Clinical Center for Diabetes, Shanghai Key Clinical Center for Metabolic Disease, Shanghai, China
Dalong Zhu	Department of Endocrinology, Drum Tower Hospital Affiliated to Nanjing University Medical School, Nanjing, Jiangsu, China
Jian Zhu	Department of Endocrinology, Drum Tower Hospital Affiliated to Nanjing University Medical School, Nanjing, Jiangsu, China
Hong Li	Department of Endocrinology, Sir Run Run Shaw Hospital Affiliated to School of Medicine, Zhejiang University, Hangzhou, Zhejiang, China
Fenping Zheng	Department of Endocrinology, Sir Run Run Shaw Hospital Affiliated to School of Medicine, Zhejiang University, Hangzhou, Zhejiang, China
Qiu Zhang	Department of Endocrinology, First Affiliated Hospital of Anhui Medical University, Hefei, Anhui, China
Honglin Hu	Department of Endocrinology, First Affiliated Hospital of Anhui Medical University, Hefei, Anhui, China
Gang Chen	Department of Endocrinology, Fujian Provincial Hospital, Fuzhou, Fujian, China
Xingquan Yang	Department of Endocrinology, Fujian Provincial Hospital, Fuzhou, Fujian, China
Xiaoyang Lai	Department of Endocrinology, The Second Affiliated Hospital of Nanchang University, Nanchang, Jiangxi, China
Jianping Liu	Department of Endocrinology, The Second Affiliated Hospital of Nanchang University, Nanchang, Jiangxi, China
Li Chen	Department of Endocrinology, Qilu Hospital of Shandong University, Jinan, Shandong, China
Ming Dong	Department of Endocrinology, Qilu Hospital of Shandong University, Jinan, Shandong, China
Zhigang Zhao	Department of Endocrinology, Yihe Hospital of Zhengzhou, Zhengzhou, Henan, China
Jian Liu	Department of Endocrinology, Yihe Hospital of Zhengzhou, Zhengzhou, Henan, China
Guangda Xiang	Department of Endocrinology, General Hospital of Central Theater Command, Wuhan, Hubei, China
Junxia Zhang	Department of Endocrinology, General Hospital of Central Theater Command, Wuhan, Hubei, China
Zhiguang Zhou	Institute of Metabolism and Endocrinology, Key Laboratory of Diabetes Immunology, Ministry of Education, National Clinical Research Center for Metabolic Diseases, The Second Xiangya Hospital and the Diabetes Center, Central South University, Changsha, Hunan, China

Continued

Name	Affiliation
Jian Peng	Institute of Metabolism and Endocrinology, Key Laboratory of Diabetes Immunology, Ministry of Education, National Clinical Research Center for Metabolic Diseases, The Second Xiangya Hospital and the Diabetes Center, Central South University, Changsha, Hunan, China
Jianping Weng	Department of Endocrinology and Metabolic Disease, The Third Affiliated Hospital of Sun Yat-sen University, Guangzhou, Guangdong, China
Longyi Zeng	Department of Endocrinology and Metabolic Disease, The Third Affiliated Hospital of Sun Yat-sen University, Guangzhou, Guangdong, China
Yuzhen Liang	Department of Endocrinology, The Second Affiliated Hospital of Guangxi Medical University, Nanning, Guangxi, China
Guoqiao Li	Department of Endocrinology, The Second Affiliated Hospital of Guangxi Medical University, Nanning, Guangxi, China
Kaining Chen	Department of Endocrinology, Hainan General Hospital, Haikou, Hainan, China
Leweihua Lin	Department of Endocrinology, Hainan General Hospital, Haikou, Hainan, China
Qifu Li	Department of Endocrinology, The First Affiliated Hospital of Chongqing Medical University, Chongqing, China
Qingfeng Cheng	Department of Endocrinology, The First Affiliated Hospital of Chongqing Medical University, Chongqing, China
Xingwu Ran	Department of Endocrinology and Metabolism, West China Hospital, Sichuan University, Chengdu, Sichuan, China
Dawei Chen	Department of Endocrinology and Metabolism, West China Hospital, Sichuan University, Chengdu, Sichuan, China
Hong Li	Department of Endocrinology, First Affiliated Hospital of Kunming Medical University, Kunming, Yunnan, China
Xin Nian	Department of Endocrinology, First Affiliated Hospital of Kunming Medical University, Kunming, Yunnan, China
Lihui Yang	Department of Endocrinology, People's Hospital of Tibet Autonomous Region, Lhasa, Tibet, China
Shuyou Meng	Department of Endocrinology, People's Hospital of Tibet Autonomous Region, Lhasa, Tibet, China
Jing Xu	Department of Endocrinology, The Second Affiliated Hospital of Xi'an Jiaotong University, Xi'an, Shaanxi, China
Junhong Long	Department of Endocrinology, The Second Affiliated Hospital of Xi'an Jiaotong University, Xi'an, Shaanxi, China
Jing Liu	Department of Endocrinology, Gansu Provincial Hospital, Lanzhou, Gansu, China
Qi Zhang	Department of Endocrinology, Gansu Provincial Hospital, Lanzhou, Gansu, China
Qingxiang Dai	Geriatrics Department, Qinghai university Affiliated Hospital, Xining, Qinghai, China
Xiaomin Xie	Department of Endocrinology, The First People's Hospital of Yinchuan, Yinchuan, Ningxia, China
Guirong Bai	Department of Endocrinology, The First People's Hospital of Yinchuan, Yinchuan, Ningxia, China
Jun Li	Department of Endocrinology, The First Affiliated Hospital, School of medicine, Shihezi University, Shihezi, Xinjiang, China
Tao Li	Department of Endocrinology, The First Affiliated Hospital, School of medicine, Shihezi University, Shihezi, Xinjiang, China
Zhong Dong	Beijing Provincial Center for Disease Control and Prevention, Beijing, China
Tao Zhang	Beijing Provincial Center for Disease Control and Prevention, Beijing, China
Sijia Liu	Beijing Provincial Center for Disease Control and Prevention, Beijing, China
Yong Yang	Beijing Provincial Center for Disease Control and Prevention, Beijing, China
Kun Geng	Beijing Provincial Center for Disease Control and Prevention, Beijing, China
Wenlong Zheng	Tianjin Provincial Center for Disease Control and Prevention, Tianjin, China
Zhihong Li	Tianjin Provincial Center for Disease Control and Prevention, Tianjin, China
Hui Wang	Tianjin Provincial Center for Disease Control and Prevention, Tianjin, China
Zuojun Wu	Tianjin Provincial Center for Disease Control and Prevention, Tianjin, China
Miao Wang	Tianjin Provincial Center for Disease Control and Prevention, Tianjin, China
Jixin Sun	Hebei Provincial Center for Disease Control and Prevention, Hebei, China
Jianwei Zhou	Hebei Provincial Center for Disease Control and Prevention, Hebei, China
Jun An	Hebei Provincial Center for Disease Control and Prevention, Hebei, China
Huaqing Shen	Hebei Provincial Center for Disease Control and Prevention, Hebei, China

Continued

Name	Affiliation
Yanfang Li	Hebei Provincial Center for Disease Control and Prevention, Hebei, China
Zeping Ren	Shanxi Provincial Center for Disease Control and Prevention, Shanxi, China
Xiuli Xue	Shanxi Provincial Center for Disease Control and Prevention, Shanxi, China
Shaohui Jia	Shanxi Provincial Center for Disease Control and Prevention, Shanxi, China
Yongping Zheng	Shanxi Provincial Center for Disease Control and Prevention, Shanxi, China
Jiaoxia Li	Shanxi Provincial Center for Disease Control and Prevention, Shanxi, China
Yonggang Qian	Inner Mongolia Provincial Center for Disease Control and Prevention, Inner Mongolia, China
Ping Ma	Inner Mongolia Provincial Center for Disease Control and Prevention, Inner Mongolia, China
Yan Su	Inner Mongolia Provincial Center for Disease Control and Prevention, Inner Mongolia, China
Liang Cao	Inner Mongolia Provincial Center for Disease Control and Prevention, Inner Mongolia, China
Xuyi Yang	Inner Mongolia Provincial Center for Disease Control and Prevention, Inner Mongolia, China
Guowei Pan	Liaoning Provincial Center for Disease Control and Prevention, Liaoning, China
Guangzhi Pan	Liaoning Provincial Center for Disease Control and Prevention, Liaoning, China
Ling Jin	Liaoning Provincial Center for Disease Control and Prevention, Liaoning, China
Quanfu Yu	Liaoning Provincial Center for Disease Control and Prevention, Liaoning, China
Yunfei Liu	Liaoning Provincial Center for Disease Control and Prevention, Liaoning, China
Yingli Zhu	Jilin Provincial Center for Disease Control and Prevention, Jilin, China
Zhifang Cheng	Jilin Provincial Center for Disease Control and Prevention, Jilin, China
Jun Yang	Jilin Provincial Center for Disease Control and Prevention, Jilin, China
Chundi Jia	Jilin Provincial Center for Disease Control and Prevention, Jilin, China
Qing Wang	Jilin Provincial Center for Disease Control and Prevention, Jilin, China
Shichun Yan	Heilongjiang Provincial Center for Disease Control and Prevention, Heilongjiang, China
Jingyang Huang	Heilongjiang Provincial Center for Disease Control and Prevention, Heilongjiang, China
Yumei Chi	Heilongjiang Provincial Center for Disease Control and Prevention, Heilongjiang, China
Li Zhang	Heilongjiang Provincial Center for Disease Control and Prevention, Heilongjiang, China
Ruifa Pang	Heilongjiang Provincial Center for Disease Control and Prevention, Heilongjiang, China
Yan Shi	Shanghai Provincial Center for Disease Control and Prevention, Shanghai, China
Yan Lu	Shanghai Provincial Center for Disease Control and Prevention, Shanghai, China
Yiling Wu	Shanghai Provincial Center for Disease Control and Prevention, Shanghai, China
Jie Yu	Shanghai Provincial Center for Disease Control and Prevention, Shanghai, China
Chunxiang Wu	Shanghai Provincial Center for Disease Control and Prevention, Shanghai, China
Jinyi Zhou	Jiangsu Provincial Center for Disease Control and Prevention, Jiangsu, China
Yunxia Wu	Jiangsu Provincial Center for Disease Control and Prevention, Jiangsu, China
Ning Zhang	Jiangsu Provincial Center for Disease Control and Prevention, Jiangsu, China
Jing Sun	Jiangsu Provincial Center for Disease Control and Prevention, Jiangsu, China
Xiumei Tian	Jiangsu Provincial Center for Disease Control and Prevention, Jiangsu, China
Jieming Zhong	Zhejiang Provincial Center for Disease Control and Prevention, Zhejiang, China
Jingying Chen	Zhejiang Provincial Center for Disease Control and Prevention, Zhejiang, China
Kaixu Xie	Zhejiang Provincial Center for Disease Control and Prevention, Zhejiang, China
Lingjuan Fu	Zhejiang Provincial Center for Disease Control and Prevention, Zhejiang, China
Xiaohua Wang	Zhejiang Provincial Center for Disease Control and Prevention, Zhejiang, China

Continued

Name	Affiliation
Yeji Chen	Anhui Provincial Center for Disease Control and Prevention, Anhui, China
Ling Zeng	Anhui Provincial Center for Disease Control and Prevention, Anhui, China
Zhenqian Cao	Anhui Provincial Center for Disease Control and Prevention, Anhui, China
Maomin Yang	Anhui Provincial Center for Disease Control and Prevention, Anhui, China
Biao Hu	Anhui Provincial Center for Disease Control and Prevention, Anhui, China
Wenling Zhong	Fujian Provincial Center for Disease Control and Prevention, Fujian, China
Qingyan Liu	Fujian Provincial Center for Disease Control and Prevention, Fujian, China
Zhiding Huang	Fujian Provincial Center for Disease Control and Prevention, Fujian, China
Qingbin Lai	Fujian Provincial Center for Disease Control and Prevention, Fujian, China
Yuyu Zhang	Fujian Provincial Center for Disease Control and Prevention, Fujian, China
Liping Zhu	Jiangxi Provincial Center for Disease Control and Prevention, Jiangxi, China
Yujing Zhao	Jiangxi Provincial Center for Disease Control and Prevention, Jiangxi, China
Wuming Tao	Jiangxi Provincial Center for Disease Control and Prevention, Jiangxi, China
Yonghai Tu	Jiangxi Provincial Center for Disease Control and Prevention, Jiangxi, China
Lin Zhou	Jiangxi Provincial Center for Disease Control and Prevention, Jiangxi, China
Xiaolei Guo	Shandong Provincial Center for Disease Control and Prevention, Shandong, China
Benzheng Chai	Shandong Provincial Center for Disease Control and Prevention, Shandong, China
Liping Ding	Shandong Provincial Center for Disease Control and Prevention, Shandong, China
Yuewei Zou	Shandong Provincial Center for Disease Control and Prevention, Shandong, China
Dongzhi Li	Shandong Provincial Center for Disease Control and Prevention, Shandong, China
Li Hua	Shandong Provincial Center for Disease Control and Prevention, Shandong, China
Shixian Feng	Henan Provincial Center for Disease Control and Prevention, Henan, China
Jianli Guo	Henan Provincial Center for Disease Control and Prevention, Henan, China
Wanguang Liu	Henan Provincial Center for Disease Control and Prevention, Henan, China
Qingxiang Li	Henan Provincial Center for Disease Control and Prevention, Henan, China
Yunzhi Zheng	Henan Provincial Center for Disease Control and Prevention, Henan, China
Minli Xu	Henan Provincial Center for Disease Control and Prevention, Henan, China
Lan Zhang	Hubei Provincial Center for Disease Control and Prevention, Hubei, China
Chunbo Li	Hubei Provincial Center for Disease Control and Prevention, Hubei, China
Yingchao Wan	Hubei Provincial Center for Disease Control and Prevention, Hubei, China
Chi Hu	Hubei Provincial Center for Disease Control and Prevention, Hubei, China
Shengping Xu	Hubei Provincial Center for Disease Control and Prevention, Hubei, China
Biyun Chen	Hunan Provincial Center for Disease Control and Prevention, Hunan, China
Huillin Liu	Hunan Provincial Center for Disease Control and Prevention, Hunan, China
Xiaojia Bian	Hunan Provincial Center for Disease Control and Prevention, Hunan, China
Wenwei Chen	Hunan Provincial Center for Disease Control and Prevention, Hunan, China
Honghua Li	Hunan Provincial Center for Disease Control and Prevention, Hunan, China
Yanjun Xu	Guangdong Provincial Center for Disease Control and Prevention, Guangdong, China
Fan Weng	Guangdong Provincial Center for Disease Control and Prevention, Guangdong, China
Hong Wu	Guangdong Provincial Center for Disease Control and Prevention, Guangdong, China
Weijin Zhang	Guangdong Provincial Center for Disease Control and Prevention, Guangdong, China

Continued

Name	Affiliation
Liankai Zhu	Guangdong Provincial Center for Disease Control and Prevention, Guangdong, China
Jun Meng	Guangxi Provincial Center for Disease Control and Prevention, Guangxi, China
Jin Yang	Guangxi Provincial Center for Disease Control and Prevention, Guangxi, China
Yongsong Zeng	Guangxi Provincial Center for Disease Control and Prevention, Guangxi, China
Gaoke Zhai	Guangxi Provincial Center for Disease Control and Prevention, Guangxi, China
Lingfeng Qin	Guangxi Provincial Center for Disease Control and Prevention, Guangxi, China
Yi Lu	Guangxi Provincial Center for Disease Control and Prevention, Guangxi, China
Zhenwang Fu	Hainan Provincial Center for Disease Control and Prevention, Hainan, China
Shukuan Wu	Hainan Provincial Center for Disease Control and Prevention, Hainan, China
Caigang Li	Hainan Provincial Center for Disease Control and Prevention, Hainan, China
Na Wang	Hainan Provincial Center for Disease Control and Prevention, Hainan, China
Lianfen Chen	Hainan Provincial Center for Disease Control and Prevention, Hainan, China
Xianbin Ding	Chongqing Provincial Center for Disease Control and Prevention, Chongqing, China
Qi Zhou	Chongqing Provincial Center for Disease Control and Prevention, Chongqing, China
Yiling Xie	Chongqing Provincial Center for Disease Control and Prevention, Chongqing, China
Rui Chen	Chongqing Provincial Center for Disease Control and Prevention, Chongqing, China
Dongsheng Yang	Chongqing Provincial Center for Disease Control and Prevention, Chongqing, China
Ying Deng	Sichuan Provincial Center for Disease Control and Prevention, Sichuan, China
Youping Hu	Sichuan Provincial Center for Disease Control and Prevention, Sichuan, China
Bo Huang	Sichuan Provincial Center for Disease Control and Prevention, Sichuan, China
Ping Wang	Sichuan Provincial Center for Disease Control and Prevention, Sichuan, China
Peng Cai	Sichuan Provincial Center for Disease Control and Prevention, Sichuan, China
Changyan Peng	Sichuan Provincial Center for Disease Control and Prevention, Sichuan, China
Xiaofang Chen	Sichuan Provincial Center for Disease Control and Prevention, Sichuan, China
Ling Li	Guizhou Provincial Center for Disease Control and Prevention, Guizhou, China
Liang Xiao	Guizhou Provincial Center for Disease Control and Prevention, Guizhou, China
Chenglin Wang	Guizhou Provincial Center for Disease Control and Prevention, Guizhou, China
Chaogang Tan	Guizhou Provincial Center for Disease Control and Prevention, Guizhou, China
Daobin Chen	Guizhou Provincial Center for Disease Control and Prevention, Guizhou, China
Min Chen	Guizhou Provincial Center for Disease Control and Prevention, Guizhou, China
Mingfang Qin	Yunnan Provincial Center for Disease Control and Prevention, Yunnan, China
Zhaomin Lei	Yunnan Provincial Center for Disease Control and Prevention, Yunnan, China
Jianzhi Qiu	Yunnan Provincial Center for Disease Control and Prevention, Yunnan, China
Wei Yu	Yunnan Provincial Center for Disease Control and Prevention, Yunnan, China
Yunfei Li	Yunnan Provincial Center for Disease Control and Prevention, Yunnan, China
Guoxia Bai	Tibet Provincial Center for Disease Control and Prevention, Tibet, China
Ying Wang	Tibet Provincial Center for Disease Control and Prevention, Tibet, China
Lin Qiu	Shaanxi Provincial Center for Disease Control and Prevention, Shaanxi, China
Ning Wang	Shaanxi Provincial Center for Disease Control and Prevention, Shaanxi, China
Xudong Zhao	Shaanxi Provincial Center for Disease Control and Prevention, Shaanxi, China
Ani Yan	Shaanxi Provincial Center for Disease Control and Prevention, Shaanxi, China

Continued

Name	Affiliation
Jianfei Liu	Shaanxi Provincial Center for Disease Control and Prevention, Shaanxi, China
Tingcai Wang	Gansu Provincial Center for Disease Control and Prevention, Gansu, China
Kaihua Hao	Gansu Provincial Center for Disease Control and Prevention, Gansu, China
Zaihong Zhang	Gansu Provincial Center for Disease Control and Prevention, Gansu, China
Zhanqi Xian	Gansu Provincial Center for Disease Control and Prevention, Gansu, China
Tenghuan Ma	Gansu Provincial Center for Disease Control and Prevention, Gansu, China
Zihua Xu	Qinghai Provincial Center for Disease Control and Prevention, Qinghai, China
Yi Yang	Ningxia Provincial Center for Disease Control and Prevention, Ningxia, China
Hongli Wang	Ningxia Provincial Center for Disease Control and Prevention, Ningxia, China
Rong Li	Ningxia Provincial Center for Disease Control and Prevention, Ningxia, China
Zhonggang Zhao	Ningxia Provincial Center for Disease Control and Prevention, Ningxia, China
Caixia Fan	Ningxia Provincial Center for Disease Control and Prevention, Ningxia, China
Purhati	Xinjiang Provincial Center for Disease Control and Prevention, Xinjiang, China
Hongjun Xu	Xinjiang Provincial Center for Disease Control and Prevention, Xinjiang, China
Liping Gao	Xinjiang Provincial Center for Disease Control and Prevention, Xinjiang, China
