

**Responsible Institution:** National Health and Family Planning Commission of the People's Republic of China

**Sponsor:** Chinese Center for Disease Control and Prevention.

155 Changbai Road, Changping District, Beijing 102206, China

**Editing:** Editorial Board of Biomedical and Environmental Sciences

Address: Editorial Office of Biomedical and Environmental Sciences, Chinese Center for Disease Control and Prevention

155 Changbai Road, Changping District, Beijing 102206, China

Tel: 86-10-58900404, 58900455, 58900233

Full Text and Manuscript Submission: [www.besjournal.com](http://www.besjournal.com) E-mail: [bes@chinacdc.cn](mailto:bes@chinacdc.cn)

**Managing Editor:** ZHANG Qun

**Publishing:** Editorial Office of BES, Chinese Center for Disease Control and Prevention

**Printing:** Beijing Kexin Printing Co., Ltd

**Domestic and Overseas Distribution:** Chinese Center for Disease Control and Prevention

**Mail-Order:** Editorial Office of Biomedical and Environmental Sciences

E-mail: [besjournal@sina.com](mailto:besjournal@sina.com)

**Annual Subscription for Vol. 30, 2017:** RMB: ¥1200; USD: \$560.00.

**CSSN:** ISSN 0895-3988 / CN 11-2816/Q

**Copyright:** © 2017 Published by China CDC. All Rights Reserved. No part of this publication may be reproduced, stored in a retrieval system, or transmitted in any form or by any means, electronic, mechanical, photocopying, recording, or otherwise without the prior permission of BES. Authors are required to grant BES an exclusive license to publish.

**Special Statement:** All articles published in this journal represent the viewpoints of the authors except where indicated otherwise.

**Instructions to Authors:** Full instructions are available online at [www.besjournal.com](http://www.besjournal.com).

**Copyright © 2017 by China CDC**

# BES

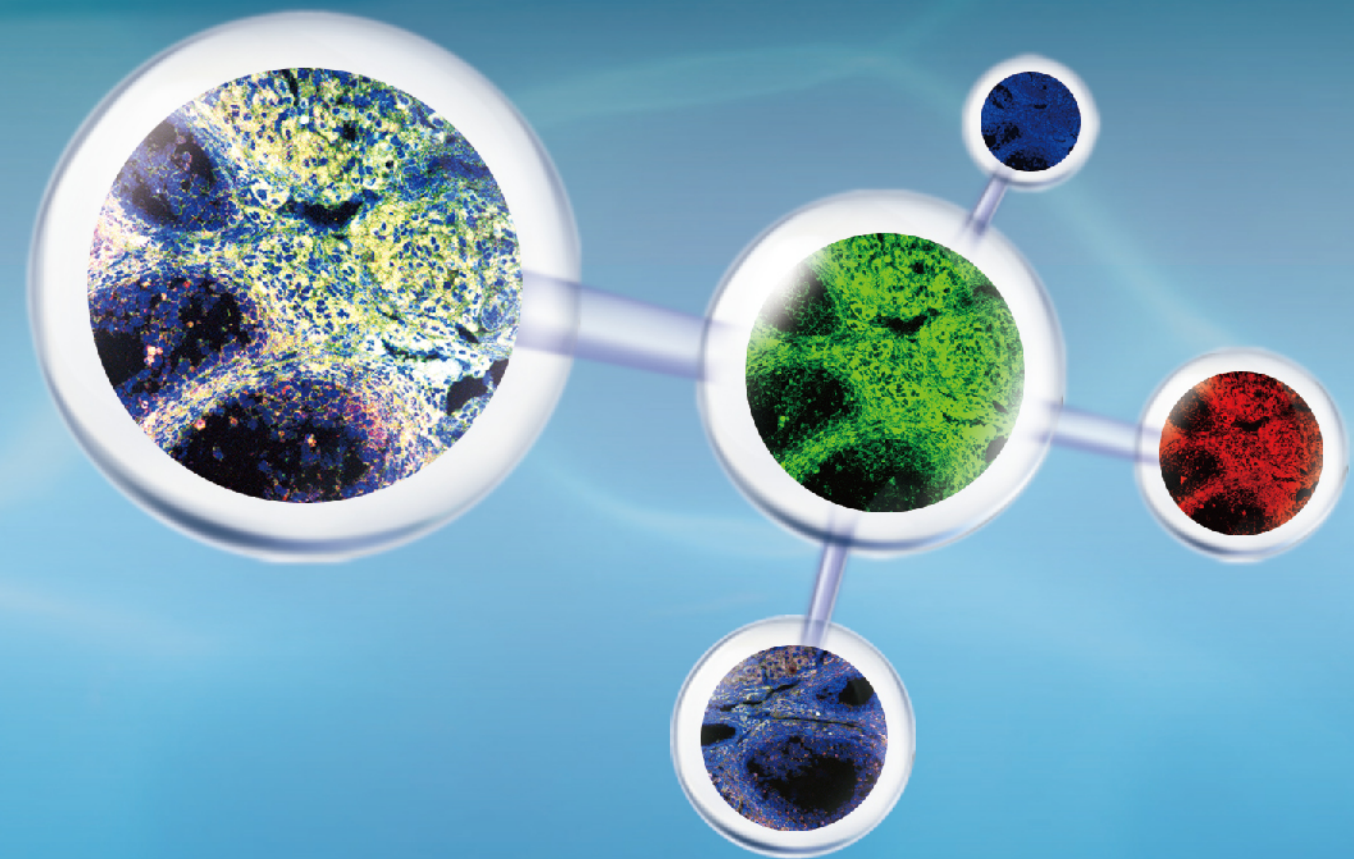
生物医学与环境科学

Vol.30, No.4, April 2017

Biomedical and Environmental Sciences

Biomedical and Environmental Sciences

Vol.30, No.4, April 2017



NHFPC  
of the PRC



Chinese Center for Disease  
Control and Prevention