

## Original Article



# Validity and Reliability of the Wristband Activity Monitor in Free-living Children Aged 10–17 Years\*

YANG Xi<sup>1,2</sup>, JAGO Russell<sup>3</sup>, ZHANG Qian<sup>1</sup>, WANG Yu Ying<sup>2</sup>, ZHANG Jian<sup>1</sup>, and ZHAO Wen Hua<sup>1, #</sup>

1. National Institute for Nutrition and Health, Chinese Center for Disease Control and Prevention, Beijing 100050, China; 2. Chinese Center for Disease Control and Prevention, Beijing 102206, China; 3. Center for Exercise, Nutrition and Health Sciences, School for Policy Studies, University of Bristol, Bristol, BS8 1TZ, UK

## Abstract

**Objective** In this study we aimed to examine the reliability and validity of the wristband activity monitor against the accelerometer for children.

**Methods** A total of 99 children (mean age = 13.0 ± 2.5 y) wore the two monitors in a free-living context for 7 days. Reliability was measured by intraclass correlation to evaluate consistency over time. Repeated-measures analyses of variance was used to detect differences across days. Spearman's correlation coefficient (*rho*), median of absolute percentage error, and Bland-Altman analyses were performed to assess the validity of the wristband against the ActiGraph accelerometer. The optimal number of repeated measures for the wristband was calculated by using the Spearman-Brown prophecy formula.

**Results** The wristband had high reliability for all variables, although physical activity data were different across 7 days. A strong correlation for steps (*rho*: 0.72, *P* < 0.001), and moderate correlations for time spent on total physical activity (*rho*: 0.63, *P* < 0.001) and physical activity energy expenditure (*rho*: 0.57, *P* < 0.001) were observed between the wristband and the accelerometer. For different intensities of physical activity, weak to moderate correlations were found (*rho*: 0.38 to 0.55, *P* < 0.001).

**Conclusion** The wristband activity monitor seems to be reliable and valid for measurement of overall children's physical activity, providing a feasible objective method of physical activity surveillance in children.

**Key words:** Physical activity; Measurement; Children; Wristband activity monitor

*Biomed Environ Sci*, 2019; 32(11): 812-822 doi: 10.3967/bes2019.103

ISSN: 0895-3988

[www.besjournal.com](http://www.besjournal.com) (full text)

CN: 11-2816/Q

Copyright ©2019 by China CDC

## INTRODUCTION

Regular physical activity plays a key role in the enhancement of physical, mental, social, and environmental health and the prevention of non-communicable diseases, including cardiovascular disease, metabolic syndrome, and cancer<sup>[1-3]</sup>. Systematic reviews reinforce global public

health concerns that physical inactivity and sedentary behavior are associated with adiposity, cardiovascular disease, cognitive decline, and social behavioral problems in young people<sup>[4,5]</sup>. Globally, the majority of children and adolescents are not sufficiently active to achieve the associated health benefits, with only 20% of youth (11–17 years old) meeting the minimum recommendation of 60

\*This work was funded by National Scientific and Technological Basic Resources Investigation Program 'Research and application of nutrition and health system for children aged 0-18 years in China' [2017FY101107].

#Correspondence should be addressed to Prof. ZHAO Wen Hua, PhD, Tel: 86-10-66237006, E-mail: zhaowh@chinacdc.cn

Biographical note of the first author: YANG Xi, female, born in 1989, PhD candidate, majoring in epidemiology, health statistics and disease prevention and control.

minutes of moderate-to-vigorous physical activity (MVPA) per day<sup>[6]</sup>. Childhood is a critical period for establishing physical activity and healthy lifestyle behaviors to prevent chronic disease<sup>[7]</sup>. There is an urgent need for effective surveillance and intervention programs to promote physical activity in the young population.

Traditional measurement strategies for children's physical activity are self-report and objective measures. Self-report methods, including questionnaires and diaries, are often used in large-scale studies because they are convenient and affordable, whereas objective methods are preferred over self-report measures for their accuracy<sup>[8]</sup>. A plethora of devices, such as wristbands, smartwatches, fitness trackers, etc., which provide new ways to measure physical activity, show promise for future measurement of physical activity and have the potential to facilitate health behavior change<sup>[9]</sup>. Nowadays, wristband activity monitors have become popular for tracking daily physical activity. A national survey in the United States showed that approximately 60% of citizens used a wearable device to track their exercise routine in 2012<sup>[10]</sup>. It is predicted that the Asia-Pacific region, especially China, will be a fast-growing market for wearable technology, owing to the increase in population, technological advancements, and huge demand for health-related product<sup>[11]</sup>. Usability tests of wearable technology show that they are simple, user-friendly, affordable, and unobtrusive, suggesting that they have the potential to make objective methods more accessible for epidemiology studies on physical activity<sup>[12,13]</sup>.

Wearable monitors offer considerable potential to track physical activity and encourage health-promoting behavior, however, their ability to accurately measure targeted behavior requires thorough validation and evaluation<sup>[14]</sup>. To date, most evidence has been gathered on adults in a laboratory setting; therefore, little is known about the feasibility and accuracy of these monitors in a young population and under free-living conditions<sup>[15]</sup>. Assessing free-living physical activity to evaluate the monitors is particularly important due to the reflection of routine day-to-day behaviors and real-life situations<sup>[16]</sup>. Accelerometer-based measurements are most frequently used for physical activity assessment in free-living sittings and marketed exclusively as a research instrument to validate against physical activity monitors<sup>[17]</sup>. A recent systematic review evaluating wearable activity monitors indicated high validity of steps and

lower validity of energy expenditure compared with accelerometer-based measurements in adults<sup>[18]</sup>. In this review, only two studies on children were identified, and both of them only explored the validity of sleep measures<sup>[19,20]</sup>. Given that physical activity and engagement with technology are highly valued behaviors in children's daily life, for either intervention or measurement purposes, it is important to establish whether wearable activity monitors effectively measure physical activity among a free-living young population.

The purpose of this study is to examine the reliability and validity of a commercially available wristband activity monitor using the ActiGraph accelerometer as a criterion standard among children aged 10–17 years in a free-living setting. We aimed to provide a feasible objective method for physical activity surveillance in children. An additional purpose is to determine the optimal number of days of data collection with a wristband activity monitor.

## METHODS

### *Participants*

On the basis of existing data indicating that the correlation between consumer-level and accelerometer monitors would be greater than 0.35<sup>[18]</sup>, we determined that a sample size of 82 would be able to detect this correlation with an alpha level of 0.05 and a power of 0.80. Children aged between 10 and 17 years (mean 13.1 years, SD 2.4) volunteered to participate in this study. 60 children were recruited from an elementary and a middle school in the Yanqing District, Beijing city (northern China), and 60 children from another elementary and middle school in the Wanzhou District, Chongqing city (southern China), selected by the Center for Disease Control and Prevention. The exclusion criteria were use of medications that could affect growth, known illness or injury, and problems that could reduce adherence to the study protocol. The parents of all participants received written and oral information about this study and signed a written informed consent. The study was conducted from March 2018 to June 2018 and was approved by the National Institute of Nutrition and Health, Chinese Center for Disease Control and Prevention (Ethics committee approval code: 2013-018).

### *Wristband Activity Monitor*

The wristband activity monitor (the wristband)

we chose to evaluate in this study is one of the most commonly used wearable activity trackers in China. The vendor of this wristband was the third largest in units sold worldwide in 2017 and had the largest year-over-year increases in the sale of wearable fitness trackers<sup>[11]</sup>. Moreover, this wristband was shown to have a smaller difference and higher correlation with indirect calorimetry for measuring physical activity energy expenditure, compared with two other common wristbands in Chinese people aged 22–27 years old<sup>[21]</sup>. This wristband is an activity monitor that is worn on the non-dominant wrist and combines data from a 3-dimensional accelerometer with heat rate data to estimate energy expenditure. Moreover, it can measure step count, distance traveled, physical activity, and sleep patterns, displayed on an LED tap screen. This monitor has a battery life of 7–15 days and can store approximately 10 days' worth of information. It is water-resistant (50 m) and syncs to both Android and iOS systems with Bluetooth 4.0. It measures 40.3 mm × 15.7 mm × 10.5 mm and weighs 7 g.

#### Accelerometer as the Criterion Measurement

The ActiGraph accelerometer (the accelerometer) was used as the criterion standard to assess children's behavior on the basis of its established reliability and accuracy<sup>[22]</sup>. The ActiGraph wGT3X-BT (ActiGraph, LLC, Pensacola, Florida, USA) is a triaxial accelerometer worn on the waist using an elastic belt to secure above the right hip bone. Participants were instructed to wear both of the monitors all the time, even when sleeping, and to remove them only if the monitors would get completely wet, such as when showering or swimming.

The monitor was programmed to begin on the afternoon of the day of the first investigation and continue for 7 complete days, ending on the morning of the day of the last investigation. For this study, the accelerometer was set to record data at a sampling rate of 30 Hertz. Raw accelerometer data were downloaded using ActiLife 6 software (ActiGraph, LLC, Pensacola, FL, USA) and then transformed into 10 s epoch files. The intensity threshold for physical activity was the cut point derived by Vanhelst et al. (2011)<sup>[23]</sup>, as it has been shown have good classification accuracy in Chinese children<sup>[24]</sup>.

#### Study Design

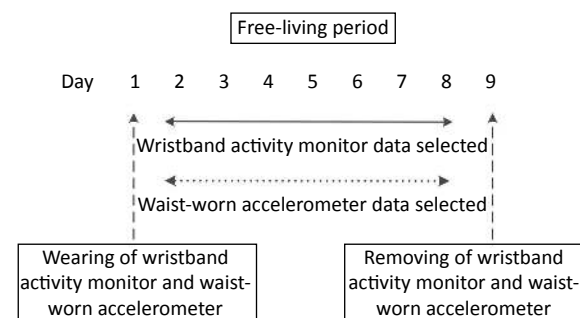
The study duration was 9 days (Figure 1). Instructions were given to the students by trained

investigators on how to wear a wristband activity monitor and a waist-worn accelerometer concurrently for 7 days. An instruction leaflet on proper use of the two monitors were also given to the students for additional guidance.

Investigators came to the schools before the start of activity monitoring, referred to as day 1, for study orientation, placement, and instructions for the wristband and accelerometer. Participants wore both of the two monitors on day 1. Activity monitoring data were collected for 7 consecutive days, referred to as days 2–8. The participants keep a log in which they recorded non-wear time and reasons for removal. The day after the 7-day collection period, the participants returned the two monitors to research team at school. The wearing time of the accelerometer is 24 hours (h) for 7 days; it has been indicated that a minimum of 4 days with more than 6 h of wearing time per day provides a reliable estimate of physical activity in children<sup>[25]</sup>. Children's information on age, gender and parents' education level were self-reported. Following a standard protocol, weight and height were measured twice to the nearest 0.1 kg and 0.1 cm, respectively, by using an electronic stadiometer (Hochoice, EF07). The study procedure followed the recommendation of recent reliability and validation methodologies for wearable sensor monitoring<sup>[26]</sup>.

#### Statistical Analysis

All statistical procedures were performed using SAS 9.4 software (SAS Institute Inc., Cary, NC, USA). The significance level was set at  $P < 0.05$ . Descriptive characteristics were presented as  $x \pm s$  or  $M$  (interquartile range; IQR). Univariate ANOVA procedures or  $\chi^2$  tests were used to examine differences in the anthropometric characteristic of the sample. The physical activity variables assessed were number of steps, time spent on physical activity by intensity, namely MVPA, vigorous-intensity physical activity (VPA), moderate-intensity



**Figure 1.** Timeline of the study protocol.

physical activity (MPA) and light-intensity physical activity (LPA), and physical activity energy expenditure. A Shapiro-Wilk test was used to determine whether the data were normally distributed. For inter-device reliability, the intraclass correlation coefficient (ICC) was used to assess the consistency over time since the activity monitor gathered multiple days' worth of measurements. The strength of reliability was interpreted on the basis of the following definitions: strong (ICC  $\geq 0.75$ ), good (ICC = 0.60–0.74), fair (ICC = 0.40–0.59) and poor (ICC < 0.40)<sup>[27]</sup>. Differences between daily means were tested using repeated measures analyses of variance (PROC MIXED). Age, gender and Body Mass Index were included as adjustment variables in the analysis of variance model.

Spearman's correlation coefficients (*rho*) were applied to assess validity when data were non-normally distributed. *Rho*  $\geq 0.70$  implied strong, 0.50–0.70 moderate, and  $\leq 0.50$  weak<sup>[28]</sup>. To enable comparison between the two monitors, the median of absolute percentage error (MAPE) was calculated:

$[(\text{Wristband output} - \text{Observer data}) / \text{Observer data}] \times 100\%$ . The Bland and Altman method provided the agreement between the two measurements and gives an indication of random error and bias. The optimal number of repeated measures for the wristband monitor was estimated by applying the Spearman-Brown prophecy formula. This formula was  $k \times \text{ICC} / [1 + (k - 1) \times \text{ICC}] = 0.8$ , which means the between-person variance was at least 80% of the total variance. The optimality criterion was *k*, which represents the number of repeated measures needed to obtain the desired reliability.

## RESULTS

### Participant Characteristics

Out of 120 recruited children, 99 (82.5%) were included. The data from 21 children were excluded due to technical problems with the device and failure in performing the task on 5 required valid days. As shown in Table 1, the gender distribution

**Table 1.** Characteristics of the study population

Participant characteristics	All	Boys	Girls	<i>P</i> value*
Sample number	99	48	51	–
Age <sup>1</sup> mean $\pm$ SD	13.0 $\pm$ 2.5	13.3 $\pm$ 2.5	12.8 $\pm$ 2.4	0.265
Height (m) <sup>a</sup> mean $\pm$ SD	1.6 $\pm$ 0.1	1.6 $\pm$ 0.2	1.5 $\pm$ 0.1	< 0.001
Weight (kg) <sup>a</sup> mean $\pm$ SD	49.8 $\pm$ 17.2	55.9 $\pm$ 19.9	44.0 $\pm$ 11.7	< 0.001
BMI (kg/m <sup>2</sup> ) <sup>a</sup> mean $\pm$ SD	20.1 $\pm$ 4.5	21.1 $\pm$ 5.3	19.2 $\pm$ 3.2	0.025
BMI categories <i>n</i> (%)				
Overweight <sup>b</sup>	29 (29.3%)	18 (37.5%)	11 (21.6%)	0.083
Obese <sup>b</sup>	19 (19.2%)	13 (27.1%)	6 (11.8%)	0.054
Ethnic <sup>b</sup> <i>n</i> (%)				
Majority	91 (91.9%)	53 (93%)	57 (90.5%)	0.517
Minority	8 (8.1%)	4 (7%)	6 (9.5%)	
Father's education <sup>b</sup> <i>n</i> (%)				
None, primary or unknown	8 (8.1%)	5 (10.4%)	3 (5.9%)	0.479
Secondary	53 (53.5%)	28 (58.3%)	25 (49.0%)	
college, university of trade	38 (38.4%)	15 (31.3%)	23 (45.1%)	
Mother's education <sup>b</sup> <i>n</i> (%)				
None, primary or unknown	14 (14.2%)	8 (16.7%)	6 (11.8%)	0.245
Secondary	43 (43.4%)	25 (52.0%)	18 (35.3%)	
college, university of trade	42 (42.4%)	15 (31.3%)	27 (52.9%)	

**Note.** BMI = body mass index. \* *P* values, which were calculated by univariate ANOVA procedures or  $\chi^2$  test of variances between genders. <sup>a</sup> Described as  $x \pm s$  because of the normal distribution. <sup>b</sup> Described as absolute number (percentage) because of categorical data.

was approximately equal, with 48 boys (BMI:  $21.1 \pm 5.3$ ) and 51 girls (BMI:  $19.2 \pm 3.2$ ), a mean age of 13.0 (s: 2.5) years, and 48.5% overweight or obese. There were no significant differences in mean age, weight, height, BMI, and household education between students included and excluded from the analyses.

### Reliability and Consistence

The median (25<sup>th</sup>, 75<sup>th</sup> quartile) values of each physical activity variable and ICC across 7 days from the wristband and the accelerometer are shown in Table 2. The test for normality revealed that physical activity variables were non-normally distributed. The ICC for median values of physical activity variables across the 7-day wristband measurements ranged from 0.71 to 0.82, less than that of accelerometer measurements (ICC: 0.72–0.91). As measured by the wristband, there was no difference across days for steps, time spent on total physical activity and LPA, whereas only accelerometer measurements of LPA and MPA showed no significant difference.

The highest level of physical activity occurred on day 1, and the lowest level was on day 4 (Figure 2). The daily patterns of steps, physical activity energy expenditure, and time spent on physical activity by intensity were similar between the two monitors. By using the Spearman-Brown prophecy formula to determine the optimal number of days for activity data collection, it was suggested that a minimum of 3 days of wristband measurement would be required to achieve an ICC of 0.8.

### Validity and Agreement

The correlation between 7-day averages for the wristband and the accelerometer was strong for steps ( $\rho$ : 0.72). For time spent on total physical activity, MVPA, VPA, and physical activity energy expenditure correlations were moderate ( $\rho$ : 0.51 to 0.63), while for MPA ( $\rho$ : 0.38) and LPA ( $\rho$ : 0.45), they were weak (Table 3). When each day was examined separately, the correlation coefficients were significant, and the lowest correlation coefficients appeared on Sunday or Day 1. Results from the analyses of MAPE demonstrated that the errors of steps and time spent on total physical activity measurement by the wristband were low (MAPE < 15%), but time spent on different intensities of physical activity and physical activity energy expenditure were relatively high (range from 29.1% to 95.9%).

Bland-Altman plots were constructed to give a visual representation of the agreement between the two monitors for physical activity variables (Figure 3). Specifically, analyses identified a mean underestimation of 633.5 steps and 244.1 kilocalories, with a mean overestimation of 21.4 minutes for time spent on total physical activity and 42.6 min for MVPA by the wristband. There did appear to be an obvious trend in the data points on the plots except for a slight trend for steps. More time spent on total physical activity and MVPA were more likely to be overestimated, and the differences between the two methods were much higher,

**Table 2.** Reliability and summary statistics for the wristband activity monitor and accelerometer

Physical activity variables	Wristband activity monitor				Accelerometer			
	Average per day <sup>a</sup>	ICC <sup>b</sup>	95% CI <sup>b</sup>	P value <sup>c</sup>	Average per day <sup>a</sup>	ICC <sup>b</sup>	95% CI <sup>b</sup>	P value <sup>c</sup>
Steps	7,244.0 (4,590.5–10,205.5)	0.71	0.62–0.79	0.320	8,331.0 (6,002.5–10,737.5)	0.72	0.62–0.80	0.019
PA (min)	166.0 (102.5–233.5)	0.76	0.68–0.83	0.723	146.0 (106.3–196.8)	0.87	0.82–0.90	0.032
MVPA	89.0 (54.0–137.0)	0.81	0.75–0.86	0.015	54.5 (38.1–74.5)	0.76	0.68–0.83	0.005
VPA	34.0 (14.0–58.0)	0.71	0.61–0.80	0.023	15.3 (6.7–23.5)	0.75	0.66–0.82	< 0.001
MPA	52.0 (27.0–85.0)	0.82	0.75–0.87	0.003	38.5 (25–52.5)	0.83	0.77–0.87	0.075
LPA	66.0 (34.5–101.5)	0.81	0.75–0.86	0.368	91.0 (59.8–126.5)	0.91	0.88–0.93	0.052
PAEE (kcal)	112.0 (71.0–162.5)	0.76	0.68–0.83	0.004	327.9 (217.1–485.7)	0.86	0.82–0.90	< 0.001

**Note.** PA = physical activity; MVPA = moderate-to-vigorous physical activity; VPA = vigorous-intensity physical activity; MPA = moderate-intensity physical activity; LPA = light-intensity physical activity; PAEE = physical activity energy expenditure; ICC = Intraclass Correlation Coefficients; CI = Confidence Interval. <sup>a</sup>Data were described as median (25<sup>th</sup> quartile, 75<sup>th</sup> quartile). <sup>b</sup>This is the intraclass correlation coefficient and 95% confidence interval across the 7 days. <sup>c</sup>This is the P value for between-day differences using repeated measures analysis.

whereas a higher level of physical activity energy expenditure was more likely to be underestimated, and the difference between the two methods were much higher.

DISCUSSION

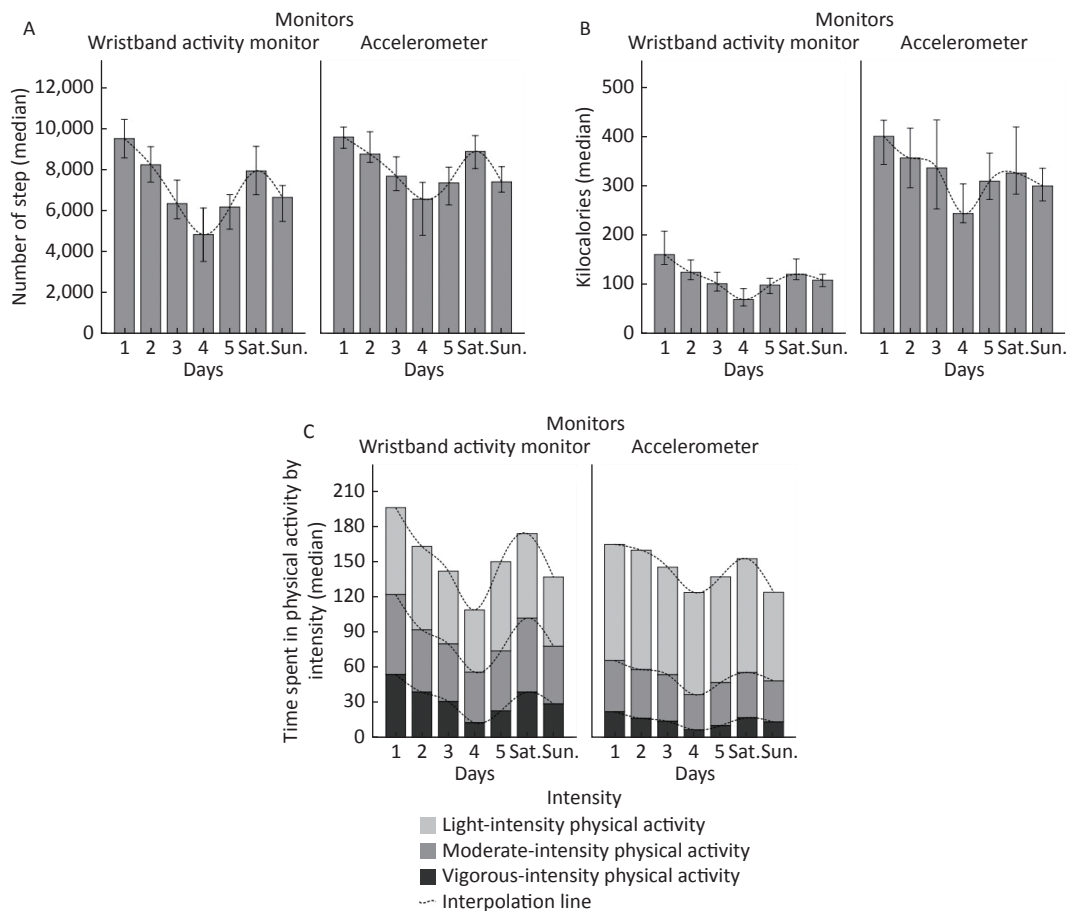
The purpose of this study was to evaluate the reliability or consistency over time and the validity of the wristband activity monitor in free-living children, by using the ActiGraph accelerometer as a criterion standard. Our study indicated that the number of steps counted by the wristband were highly correlated with estimates from the accelerometer, whereas moderate correlations were found for time spent on total physical activity and physical activity energy expenditure. Different intensities of physical activity estimates from the wristband showed weak to moderate correlations with the accelerometer. In particular, higher correlations were found for VPA and MVPA than for MPA and LPA. Meanwhile, the

present findings also indicated that the wristband had consistently high inter-device reliability for steps, physical activity at different intensities and physical activity energy expenditure.

Reliability

The wristband demonstrated high reliability, even though the median time spent on physical activity was different across days. Reliability between wrist-worn monitors and the accelerometer reported by other investigators was substantial to almost perfect for steps (ICC: 0.76–1.00) and physical activity energy expenditure (ICC: 0.71–0.97)<sup>[29,30]</sup>. This discrepancy in reliability may be due to the larger sample size and free-living conditions in our study compared with previous studies of fewer than 10 participants in laboratory settings.

Knowledge about reliability helps to guide researchers as to the optimal number of measurement days necessary to capture a good



**Figure 2.** Average number of steps (A), kilocalories (B), and time spent on physical activity by intensity (C) per day from wristband activity monitor and accelerometer.



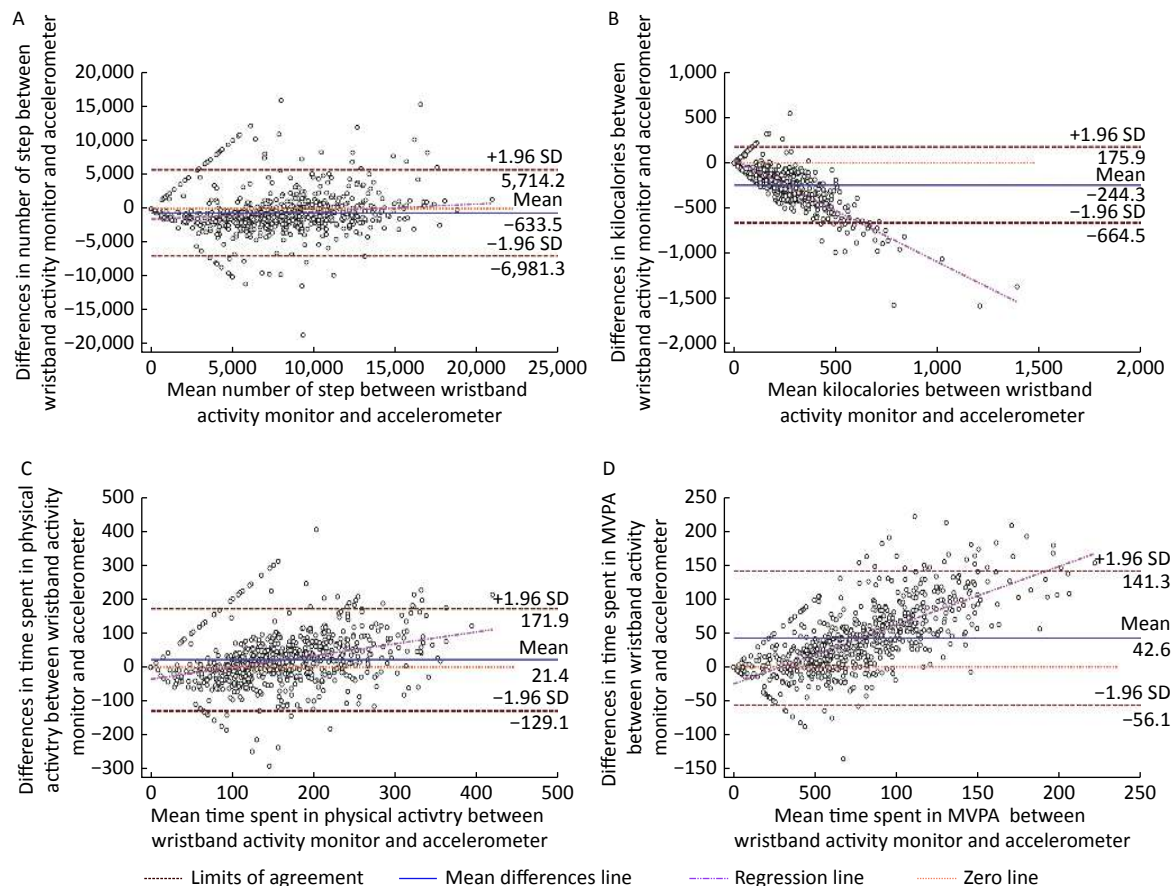
estimation of overall physical activity. This study estimated that 3 days of monitoring children's physical activity were required to attain a reliability

of 0.80. Trost et al. indicated that 4–5 days of monitoring would be necessary to achieve a reliability of 0.80 in youth<sup>[31]</sup>. In a study by Treuth et

**Table 3.** Validity and MPAE of wristband activity monitor with accelerometer

Physical activity variables	Spearman's correlations between Wristband activity monitor and Accelerometer*								MAPE (%) between the two monitors
	Day 1	Day 2	Day 3	Day 4	Day 5	Saturday	Sunday	7-day average	
Steps	0.58	0.74	0.78	0.76	0.79	0.64	0.54	0.72	~14.5
PA (min)	0.51	0.66	0.74	0.68	0.74	0.55	0.34	0.63	8.0
MVPA	0.30	0.40	0.67	0.66	0.65	0.41	0.41	0.55	61.2
VPA	0.20	0.36	0.60	0.55	0.52	0.39	0.40	0.51	95.9
MPA	0.15	0.33	0.49	0.56	0.42	0.38	0.09	0.38	36.1
LPA	0.35	0.39	0.63	0.51	0.52	0.41	0.20	0.45	~29.1
PAEE (kcal)	0.51	0.64	0.66	0.56	0.49	0.53	0.46	0.57	~68.1

**Note.** PA = physical activity; MVPA = moderate-to-vigorous physical activity; VPA = vigorous-intensity physical activity; MPA = moderate-intensity physical activity; LPA = light-intensity physical activity; PAEE = physical activity energy expenditure; MAPE = median of absolute percentage error. All  $P < 0.001$ .



**Figure 3.** Bland and altman plots of physical activity variables to evaluate the agreement between the wristband activity monitor and accelerometer. Mean differences and upper/lower limits of agreement ( $\pm 1.96$  s) of steps (A), kilocalories (B), physical activity (C), and MVPA (D) between the two monitors. MVPA = moderate-to-vigorous physical activity.

al. on girls, 3, 4, and 5 days of monitoring were required to attain a reliability of 0.64, 0.70, and 0.75<sup>[32]</sup>. In designing studies, the sample size, subject compliance, logistics, and cost will weigh into the decision as to how many monitoring days are feasible.

### Validity

The results obtained with the wristband and the accelerometer were significantly correlated, which could be principally attributed to the strong correlation for day 3. Over an average of 7 days, high correlations ( $\rho = 0.72$ ) were observed in steps, and steps measured by the wristband were underestimated by 14.5%. This is consistent with the findings of Sharp et al., who compared the results obtained with two wearable devices to observer step counts in preschool children<sup>[33]</sup>. Generally, in adults, wristband-measured steps showed a trend towards small differences but even stronger correlations ( $\rho$ : 0.90–0.99) with accelerometer data<sup>[34,35]</sup>. The relatively lower validity in our study might be due to the need to rely on the children's compliance, the ability of children to follow the study protocol, and recording of the wristband monitor's reading by investigators. Besides, some wristband monitors have also been previously evaluated under laboratory conditions, where the correlation with criterion methods was considerably stronger. Most studies using an accelerometer as the criterion indicated that wrist-worn trackers underestimated steps during treadmill walking and running<sup>[15,36]</sup>. In contrast, one study of 104 adults wearing a wrist-worn monitor (Fibit Flex) for 7 days under free-living conditions found a median overestimation of 1,300 steps/day compared with the waist-worn ActiGraph<sup>[37]</sup>.

A feature of this study is the ability to evaluate the time spent on different intensities of physical activity. As MVPA is accepted as a yardstick of healthful activity behavior, replacing sedentary behavior with LPA has been indicated to reduce the risk of all-cause mortality<sup>[38,39]</sup>. However, the performance of wrist-worn trackers on the intensity of children's free-living activity is relatively unknown. In this study wristband-measured physical activity at intensities higher than moderate (namely MVPA and VPA) were moderately correlated ( $\rho = 0.55$  and  $\rho = 0.51$ ) and differed (MAPE = 61.2% and MAPE = 95.9%) from those measured with the accelerometer, whereas intensities of activity lower than moderate (namely LPA and MPA) were weakly correlated ( $\rho = 0.45$  and  $\rho = 0.38$ ) and had

modest differences (MAPE = –29.1% and MAPE = 36.1%). This pattern was closely followed in a recent study on children wearing a wrist-worn activity monitor (Polar Active Watch) during 80 min of afterschool programs for 5 school days. The correlations found were greater, and the differences were larger than in our study<sup>[40]</sup>. This is likely because of the different sensitivities of wristband activity monitors to various types of movement and the lack of consensus on cut-off points when translating accelerometer intensity into physiologic intensity. Meanwhile, both of the studies demonstrate that wrist-worn trackers overestimated the time spent on MVPA relative to the accelerometer with large MAPE despite the high correlation, but MAPE and its correlation was low in LPA. Conceptually, while MAPE is a calculation of absolute error between the monitors in physical activity estimates, the correlation is a measurement of the linear relationship illustrating consistency of the same participants' relative position between the monitors. Further, the findings of the current research extend those of the previous study by showing that in a free-living setting, a wrist-worn monitor can provide acceptable estimations of different intensities of physical activity among children.

Finally, this study observed a moderate degree of accuracy ( $\rho = 0.57$ ) and an underestimation of physical activity energy expenditure (mean: –244.1 kcal/day) by the wristband compared with the accelerometer. To date, the only wrist-worn device for which the validity of energy expenditure estimation assessed in children was Actiwatch, which found a good correlation ( $\rho = 0.80$ ) with indirect calorimetry<sup>[41]</sup>. Previously reported validities of wrist-worn monitors in adults ranging from 0.74 to 0.88 were also higher than what we observed<sup>[42,43]</sup>. Regardless of the criterion measures, physical activity energy expenditure measured from wearable activity trackers was more often underestimated by 14%–60%<sup>[44,45]</sup>. We found a significant difference of 68.1% between the wristband and the accelerometer. These differences could be due to variations in how well the monitor could record different types and intensities of activity, how often and for how long the monitors were removed, true differences in physical activity performed for the 7 days, and other random effects.

The current study has numerous strengths. Firstly, as highlighted earlier, the assessment of the wristband was in a free-living setting for estimation of unstructured lifestyle activity in children, while



existing evidence is mainly from laboratory context. Thus, the findings of this study were more likely to reflect the performances of the wrist-worn monitor in real-world practice, providing a scientific basis of physical activity surveillance in children. Secondly, the reliability and validity of the monitor were evaluated for 7-day of a wearing protocol including both weekday and weekend days. Thirdly, a recent review indicated that sample sizes in validity and reliability studies of consumer-wearable activity trackers ranged from 6 to 65<sup>[18]</sup>. This study was conducted among a relatively large sample in children. Moreover, to our knowledge, this is the first study to evaluate the performance of wrist-worn trackers across a range of physical activity variables, including time spent on different intensities of physical activity, steps, and physical activity energy expenditure, showing a more complete picture of the monitors' capabilities in children.

Despite the strengths of this study, some limitations should be acknowledged. Careful consideration should be given to the effects of movement artefacts, due to the use of monitors in different attachment sites that may not be ideal for direct comparison. Research indicates that the activity monitor worn on the wrist recorded 2,558 more steps than the one worn on the waist under free-living conditions, since wrist movements might be identified as false step counts<sup>[46]</sup>. In general, waist-worn trackers outperformed wrist-worn monitors for step accuracy<sup>[47]</sup>. In this study, the wristband had 633.5 lower mean steps than the accelerometer, which might be because of the placement of the monitors influencing physical activity variables or the sensitivity of the wristband for recording steps. However, a recent study support the notion that physical activity data obtained from waist- and wrist-worn activity monitors correlates moderately well in children and adults<sup>[48,49]</sup>. In this regard, the findings of this study could provide some information on evaluation despite the different placement of the two monitors. Nyberg et al. also found that wrist placement might be more feasible than waist placement in children and may potentially facilitate long-term recordings since the wrist track can be worn overnight conveniently<sup>[41]</sup>. Besides, the discrepancy between the two monitors could possibly be attributed to not only the wristband activity monitor, but also the ActiGraph accelerometer, which is not the gold standard for steps and physical activity energy expenditure. However, the ActiGraph has been shown to be an

accurate tool for children's physical activity measurement and has been widely used in epidemiological studies<sup>[50]</sup>.

## CONCLUSION

The wristband activity monitor appears to be a valid and reliable measure to record children's step in free-living settings. It was found to be feasible for measuring overall time spent on physical activity and physical activity energy expenditure. The wristband's ability to measure different intensities of physical activity, especially low-intensity activity, should be improved. This study herein suggests that the wristband seems to offer a suitable alternative to the accelerometer for providing group, but not individual, estimations of physical activity variables. This is important for public health surveillance and physical activity promotion alongside advance in wearable fitness measurement techniques. Further research scrutinizing the monitors' usability, acceptability and durability are warranted, since the new wave of activity monitors provides exciting possibilities for healthcare servers and researches.

## AUTHORS' CONTRIBUTIONS

All authors were involved in the conception of the manuscript. Prof. ZHAO Wen Hua directed all aspects of the study, including coordinated the design and administration of the research, reviewed the manuscript and so on. Ms. YANG Xi contributed to the design and implementation of the study, analysis and interpretation of data, and drafted the manuscript. Prof. Jago Russ contributed intellectual input into the main ideas of this paper and reviewed the manuscript. Dr. ZHANG Qian and Dr. WANG Yu Ying contributed to study design and implementation. Dr. ZHANG Jian assisted with writing of the manuscript. All authors read and approved the final manuscript.

## ACKNOWLEDGEMENTS

We would like to thank all children, parents, teachers and staff that made this study possible and Dr. QIU Jun Qiang from Department of Sports Biochemistry, Beijing Sport University for accelerometers data collection.

## CONFLICTS OF INTEREST STATEMENT

The authors declare that they have no competing

interests.

Received: July 11, 2019;

Accepted: September 23, 2019

## REFERENCES

- Chekroud SR, Gueorguieva R, Zheutlin AB, et al. Association between physical exercise and mental health in 1.2 million individuals in the USA between 2011 and 2015: a cross-sectional study. *The Lancet Psychiatry*, 2018; 5, 739–46.
- Lee IM, Shiroma EJ, Lobelo F, et al. Effect of physical inactivity on major non-communicable diseases worldwide: an analysis of burden of disease and life expectancy. *The Lancet*, 2012; 380, 219–29.
- Andersen LB, Harro M, Sardinha LB, et al. Physical activity and clustered cardiovascular risk in children: a cross-sectional study (The European Youth Heart Study). *The Lancet*, 2006; 368, 299–304.
- Poitras VJ, Gray CE, Janssen X, et al. Systematic review of the relationships between sedentary behaviour and health indicators in the early years (0–4 years). *BMC Public Health*, 2017; 17, 868–92.
- Carson V, Kuzik N, Hunter S, et al. Systematic review of sedentary behavior and cognitive development in early childhood. *Prev Med*, 2015; 78, 115–22.
- Sallis JF, Bull F, Guthold R, et al. Progress in physical activity over the Olympic quadrennium. *Lancet*, 2016; 388, 1325–36.
- The NS, Suchindran C, North KE, et al. The Association of Adolescent Obesity with Risk of Severe Obesity in Adulthood. *JAMA*, 2010; 304, 2042–7.
- Kang M, Mahar MT, Morrow JR. Issues in the Assessment of Physical Activity in Children. *J Phys Edu, Recreation & Dance*, 2016; 87, 35–43.
- Fanning J, Mullen SP, McAuley E. Increasing Physical Activity With Mobile Devices: A Meta-Analysis. *J Med Internet Res*, 2012; 14, e161.
- Fox S DM. Tracking for Health. Pew Research Center, Pew Internet and American Life Project. 2013.
- Wire B. Global Fitness Tracker Market - by Device Type, Display Type, Compatibility, Sales Channel, Region - Market Size, Demand Forecasts, Company Profiles, Industry Trends and Updates (2017-2023). 2018.
- Ridgers ND, Timperio A, Brown H, et al. Wearable Activity Tracker Use Among Australian Adolescents: Usability and Acceptability Study. *JMIR Mhealth Uhealth*, 2018; 6, e86.
- Liang J, Xian D, Liu X, et al. Usability Study of Mainstream Wearable Fitness Devices: Feature Analysis and System Usability Scale Evaluation. *JMIR Mhealth Uhealth*, 2018; 6, e11066–e.
- Patel MS, Asch DA, Volpp KG. Wearable devices as facilitators, not drivers, of health behavior change. *JAMA*, 2015; 313, 459–60.
- Case MA, Burwick HA, Volpp KG, et al. Accuracy of smartphone applications and wearable devices for tracking physical activity data. *JAMA*, 2015; 313, 625–6.
- Kim Y, Welk G. Validity of consumer-based physical activity monitors. *Med Sci Sports Exerc*, 2014; 46, 1840–8.
- Ridgers ND, McNarry MA, Mackintosh KA. Feasibility and Effectiveness of Using Wearable Activity Trackers in Youth: A Systematic Review. *JMIR Mhealth Uhealth*, 2016; 4, e129.
- Goto M, Furberg R. Systematic review of the validity and reliability of consumer-wearable activity trackers. *Int J Behav Nutr Phys Act*, 2015; 12, 159.
- Hiruma L, Avis K, Montgomery-Downs H, et al. Comparison of a Commercial Accelerometer with Polysomnography and Actigraphy in Children and Adolescents. *Sleep*, 2015; 38, 1323–30.
- Baker F, Colrain I. Validation of Sleep-Tracking Technology Compared with Polysomnography in Adolescents. *Sleep*, 2015; 38, 1461–8.
- Zhou HD, Li H. The evaluation of wristband activity monitor measuring physical activity energy expenditure in 22–27 years old people. *Fortune Times*, 2015; 2015, 205–6.
- Janssen X, Cliff D, Reilly J, et al. Evaluation of Actical equations and thresholds to predict physical activity intensity in young children. *J Sports Sci*, 2015; 33, 498–506.
- Vanhelst J, Béghin L, Turck D, et al. New validated thresholds for various intensities of physical activity in adolescents using the Actigraph accelerometer. *Int J Rehabil Res*, 2011; 34, 175–7.
- Zhu Z, Chen P, Zhuang J. Intensity classification accuracy of accelerometer-measured physical activities in Chinese children and youth. *Res Q Exerc Sport*, 2013; 84, S4–S11.
- Bisson M, Tremblay F, Pronovost E, et al. Accelerometry to measure physical activity in toddlers: Determination of wear time requirements for a reliable estimate of physical activity. 2018.
- Düking P, Fuss FK, Holmberg HC, et al. Recommendations for Assessment of the Reliability, Sensitivity, and Validity of Data Provided by Wearable Sensors Designed for Monitoring Physical Activity. *JMIR Mhealth Uhealth*, 2018; 6, e102.
- Fleiss JL, Levin B, Paik MC. The Measurement of Interrater Agreement. John Wiley & Sons, Inc, 2004.
- Bland JM, Altman DG. Statistical methods for assessing agreement between two methods of clinical measurement. *Lancet*, 1986; 1, 307–10.
- Dontje M, de Groot M, Lengton R, et al. Measuring steps with the Fitbit activity tracker: an inter-device reliability study. *J Med Eng Technol*, 2015; 39, 286–90.
- Mammen G, Gardiner S, Senthinathan A, et al. Is this Bit Fit? Measuring the Quality of the Fit-Bit Step Counter. *The East Japan journal of clinical orthopaedics*, 2012; 5, 30–9.
- Trost SG, Pate RR, Freedson PS, et al. Using objective physical activity measures with youth: How many days of monitoring are needed? *Med Sci Sports Exerc*, 2000; 32, 426.
- Treuth MS, Sherwood NE, Butte NF, et al. Validity and reliability of activity measures in African-American girls for GEMS. *Med Sci Sports Exerc*, 2003; 35, 532–9.
- Sharp CA, Mackintosh KA, Erjavec M, et al. Validity and reliability of the Fitbit Zip as a measure of preschool children's step count. *BMJ Open Sport Exerc Med*, 2017; 3, e000272.
- Ferguson T, Rowlands AV, Olds T, et al. The validity of consumer-level, activity monitors in healthy adults worn in free-living conditions: a cross-sectional study. *Int J Behav Nutr Phys Act*, 2015; 12, 1–9.
- Tully MA, McBride C, Heron L, et al. The validation of Fitbit Zip™ physical activity monitor as a measure of free-living physical activity. *Bmc Research Notes*, 2014; 7, 1–5.
- Storm F, W Heller B, mazzà C. Step Detection and Activity Recognition Accuracy of Seven Physical Activity Monitors. *Plos One*, 2015; 10, 23–15.
- Chu AH, Ng SH, Paknezhad M, et al. Comparison of wrist-worn Fitbit Flex and waist-worn ActiGraph for measuring steps in free-living adults. *Plos One*, 2017; 12, e0172535.
- Dunstan DW, Howard B, Healy GN, et al. Too much sitting – A health hazard. *Diabetes Res Clin Pract*, 2012; 97, 368–76.
- JP W, MK T, YC Y, et al. Minimum amount of physical activity for reduced mortality and extended life expectancy: a prospective cohort study. *Lancet (London, England)*, 2011;

- 378, 1244–53.
40. Kim Y, Lochbaum M. Comparison of Polar Active Watch and Waist- and Wrist-Worn ActiGraph Accelerometers for Measuring Children's Physical Activity Levels during Unstructured Afterschool Programs. [Int J Env Res Pub He](#), 2018; 15, 2268.
  41. Nyberg G, Bak EE, Ekelund U, et al. Validity and comparability of a wrist-worn accelerometer in children. *J Phys Act Health*, 2012; 9, 389–93.
  42. Diaz KM, Krupka DJ, Chang MJ, et al. Fitbit®: An accurate and reliable device for wireless physical activity tracking. [Int J Cardiol](#), 2015; 185, 138–40.
  43. Noah JA, Spierer DK, Gu J, et al. Comparison of steps and energy expenditure assessment in adults of Fitbit Tracker and Ultra to the Actical and indirect calorimetry. *J Med Eng Technol*, 2013; 37, 456–62.
  44. Bai Y, Welk GJ, Nam YH, et al. Comparison of Consumer and Research Monitors under Semistructured Settings. *Med Sci Sports Exerc*, 2016; 48, 151–8.
  45. Sasaki JE, Hickey A, Mavilia M, et al. Validation of the Fitbit wireless activity tracker for prediction of energy expenditure. *J Phys Act Health*, 2015; 12, 149.
  46. Tudor-Locke C, Barreira T, Schuna J. Comparison of Step Outputs for Waist and Wrist Accelerometer Attachment Sites. *Med Sci Sports Exerc*, 2015; 47, 839–42.
  47. Stackpool CM. Accuracy of various activity trackers in estimating steps taken and energy expenditure. 2013.
  48. Scott JJ, Rowlands AV, Cliff DP, et al. Comparability and feasibility of wrist- and hip-worn accelerometers in free-living adolescents. *J Sci Med Sport*, 2017; 20, 1101–6.
  49. Kamada M, Shiroma EJ, Harris TB, et al. Comparison of physical activity assessed using hip- and wrist-worn accelerometers. *Gait Posture*, 2016; 44, 23–8.
  50. K R, R K, R MS, et al. Children's physical activity assessed with wrist- and hip-worn accelerometers. [Med Sci Sports Exerc](#), 2014; 46, 2308–16.